



# NORWICH

BUSINESS IMPROVEMENT DISTRICT



ANGLIA IN BLOOM  
The Unique Environmental Opportunity  
For Communities In The Eastern Region

## PORTFOLIO

### 2017





# Contents

Page 1 – Introduction - About Norwich BID

Page 2 – Norwich BID Team and Board Members

Page 3 – A Greener Cleaner City

## Horticultural Achievement

Page 4 - Parks, Gardens, Green Spaces and Trees within Norwich BID's Boundary

Page 6 - Perennials and Sustainable Plantings

Page 8 - Trees, The Back Bone, Lungs and Beauty in The Heart of Norwich

Page 10 - Spring Baskets and Planters

Page 12 to 16 - St. Stephens Church Grounds Volunteers (Anglia in Bloom Best Church Entry)

Page 13 - Newspaper Article – Digging For Victory in Battle To Beat Polio Around The World

Page 17 - Heavenly Gardens – A Vision For The Future

Page 18 - Strangers Hall Museum – 17<sup>th</sup> Century Knot Garden Volunteers

Page 19 - City College Norwich Plant Production and Plantings Partnership

## Environmental Responsibility

Page 20 - Norwich City Councils Published Environmental Policy

Page 21 - Street Cleansing and Waste Management

Page 22 - Energy, Recycling, Resource and Waste Management – INTU Chapelfield

Page 23 - Energy, Recycling, Resource and Waste Management – Castle Mall

Page 23 - Energy, Recycling, Resource and Waste Management – Anglian Buses

Page 24 - Improving Norwich Cycle ways

Page 25 - Heritage, Pride of Place, Art in the Landscape, Street Furniture and Signs

## Community Participation

Page 26 - The Friends of Norwich in Bloom

Page 27 - Promoting Norwich, The Friends of Norwich in Bloom and The Environment

Page 28 - Local in Bloom Environmental Competitions – Sponsored By Notcutts

Page 30 - Partnerships and Sponsorship The Assembly House

Page 31 - Sponsorship Grants, Donations and Fund Raising

## Appendices

Page 32 - Newspaper Article – One Planet Norwich Attracts Thousands of Families

Page 33 - Newspaper Article – International Claim For Gardening Team

Page 34 - City College and Hockering Nursery Plant Production Programme 2016/17

Page 36 - Planting Plan – All Saints Green 2017

Page 38 - Planting Plan – Golden Ball Street 2017

Page 40 - George Ishmael RHS Britain in Bloom Community Champion Nomination

Page 42 - Norwich BID Tour Route Map Tuesday 18<sup>th</sup> July and Tuesday 8<sup>th</sup> August 2017

Page 44 - Norwich BID Tour Route Itinerary 2017

Page 45 - Norwich BID Tour – Anglia in Bloom Special Awards Nominations 2017

### Front Cover

Top Right Norwich BID City of Stories Dragon Mural at Red Lion Street 29<sup>th</sup> March 2017

Middle Left Sponsors and Volunteers at Chapelfield Plain 11<sup>th</sup> April 2017 Photo Antony Kelly Archant

Bottom Left Norwich Norse maintain Spring Amberol Barrier Baskets Golden Ball Street 12<sup>th</sup> April 2017

Bottom Right City College Students and Staff hold up Proud Finalist Signage during Plant Sales 17<sup>th</sup> May 2017

# ABOUT NORWICH BID

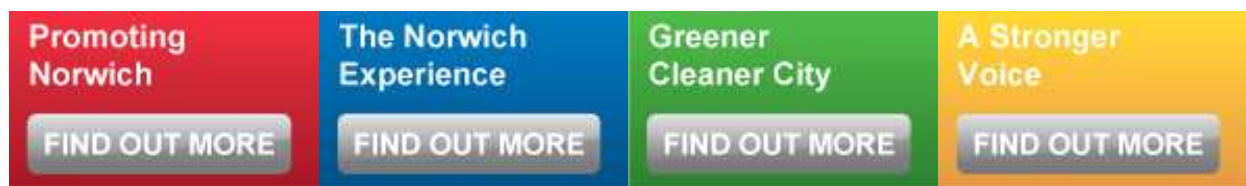


Established in November 2012 the Norwich Business Improvement District (BID) has proved itself as an inventive and progressive organisation run for local businesses by local businesses.

The Norwich BID covers a defined area of the city where the team works to improve the trading environment and identifies additional projects and services that develop the city centre. Norwich BID enhances and promotes the local environment for its businesses, employees, customers and the community.

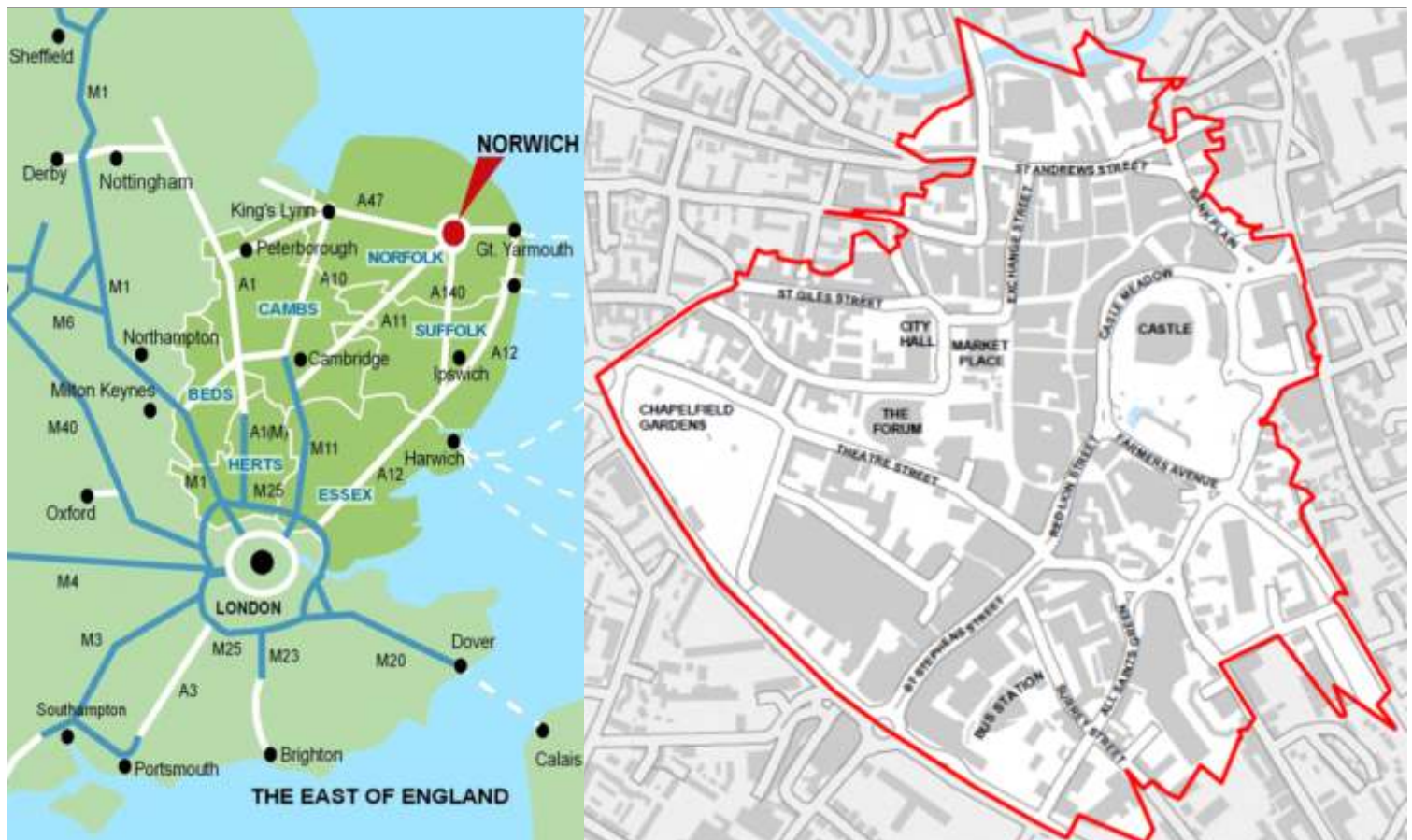
Norwich BID will raise £3m over its five year term through an annual 1% levy on the rateable value of business premises over £15,000 within the BID area.

The overarching vision of Norwich BID is to; Make a clear positive impact on the vitality of our city centre and the success of the businesses within it. Norwich BID's objectives are split into the following work strands:



It is clear to see the team has a huge passion and drive for the future of Norwich's city centre through Norwich BID's vast number of achievements since launching in November 2012. It is to the team's credit that in year 2, Norwich BID was awarded "Highly Recommended" – at the ATCM's Business Improvement District of the Year Awards.

Norwich BID is an extremely innovative organisation with many successful projects and initiatives being the first of their kind in the UK. Norwich BID is forward thinking and is continually looking to develop new and inspiring ventures which put Norwich ahead of other cities across the UK.





## The Norwich BID Team

Rachael Fretter - Marketing Manager  
 Martin Blackwell - Business and Operations Manager  
 Stefan Gurney - Executive Director  
 Laura Nazmdeh - Digital Marketing Executive  
 Mike King - City Hosts Manager  
 Jumara Mulcahy - City Hosts Supervisor  
 Tracey Owen - City Hosts Supervisor  
 Will Lubbock - Apprentice Administrator  
 Caroline Bidewell - Office & Engagement Executive



**Jessica Bricknell, 3rd Year UEA International Development student and City Host Volunteer**

## The Norwich BID Board

Councillor Alan Waters - Norwich City Council  
 Nikki Rotsos - Norwich City Council  
 Tim Bishop - The Forum Trust Ltd  
 Nicole Pugh - Royal Archade  
 Nick Bond - VisitNorwich  
 Jane Claridge - Theatre Royal (Norwich) Trust Ltd  
 Philip Cutter - The Murderers, Public House  
 Andrew Dernie - Aviva  
 Stefan Gurney - Norwich BID Executive Director  
 Jonathan Kemp - Debenhams Retail Plc  
 Paul McCarthy - intu Chapelfield  
 Steve Miller - Norfolk County Council  
 Richard Marks - John Lewis Partnership  
 Peter Mitchell - Jarrold & Sons Ltd (Chair)  
 Adrian Newborough - Fosters Solicitors  
 Councillor George Nobbs - Norfolk County Council  
 Roger Pemberton - Norwich Lanes  
 Gavin Hunter - Konnect  
 John Gordon-Saker - Open  
 Jonty Young - Norwich Lanes  
 Hat Johnson - Jigsaw  
 Amanda Phillips - Castle Mall  
 Chris Liuff - Marks & Spencer Plc  
 Sarah Steed Norwich University of the Arts (NUA)  
 Tim Williams Archant Regional Ltd

The Norwich BID is guided by a Board of members, which is chaired by Peter Mitchell (Jarrolds). Their collective knowledge and experience covers the retail, tourism, media, commercial and leisure sectors that have a vested interest in properly representing the interests of BID levy payers. The Board work on behalf of all BID businesses to implement ideas that are important for the future prosperity of the city. The Board which meets on a monthly basis is made up of the following Norwich representatives:

There will be an annual election for BID board members and we encourage anyone within the BID area to put themselves forward to ensure that over the five-year term of the BID as many sectors and sizes of businesses are represented.





## A Greener Cleaner City

We want to make Norwich one of the UK's leading working and shopping environments by introducing environmental and sustainable initiatives. Coordinated waste collections, reducing the impact of vacant shops and promoting Norwich as one of Europe's greenest cities are all on our agenda. Working with FirstBus we are able to offer BID businesses membership to their [Corporate Travel Club and substantial savings for employees.](#)

Save Money with our Waste and Recycling Scheme, We are pleased to announce that through our waste and recycling initiative we can offer you significant cost savings on your waste collections.

### Fixed Pricing Schedule 2017/2018 (all prices in £ and excluding VAT)

	Sack	Wheeled Bin 240	Wheeled Bin 360	Wheeled Bin 660	Wheeled Bin 1100
<b>Dry Mixed &amp; Recycables (DMR)</b>					
<b>Collect/treat/dispose per lift</b>	£1.70	£3.90	£4.50	£5.10	£5.70
<b>General Waste</b>					
<b>Collect/treat/dispose per lift</b>	£1.70	£7.30	£8.95	£10.10	£13.30
<b>Food</b>					
<b>Collect/treat/dispose per lift</b>	N/A	£9.20	N/A	N/A	N/A
<b>Glass</b>					
<b>Collect/treat/dispose per lift</b>	N/A	£4.70	N/A	N/A	N/A
<b>Bin Hire per annum</b>	N/A	£36.80	£36.80	£36.80	£36.80

We have worked closely with the business community to understand the needs and priorities for a innovative waste and recycling service and we are working in partnership with local company MW Whites Ltd to deliver cost savings, great service and strong management.

Norwich BID is confident the city centre waste and recycling scheme can save businesses money. The scheme aims to provide businesses in the city with the following services:

- **An excellent recycling service**
- **A general waste collection service at a “significantly” reduced cost**
- **A reduction in congestion and pollution in the city centre by reducing the number of waste collections on a weekly basis**
- **Minimising business exposure to future land fill tax increases**

The Norwich BID aims to also dramatically improve recycling rates and under the new system, cardboard, food waste and all dry mixed recyclable goods will all be recycled, with only modest amounts of residual waste being sent to landfill.

"I appointed White's once the BID identified them as the preferred waste management supplier for our city. They've been responsive to requests, their service delivery has been excellent and all at a significantly reduced cost." Paul McCarthy, Centre Manager, Castle Mall.

The first year in operation has been a great success and we have streamlined and improved trade waste collections within the city centre whilst achieving great cost savings for businesses.

To brighten up some of the empty shop windows in the city centre we have displayed city centre maps and what's on posters, not only do these provide useful information to city centre users but they also lessen the impact of vacant shops on the city centre landscape.



# HORTICULTURAL ACHIEVEMENT

## Parks, Gardens, Green Spaces and Trees within Norwich BID's Boundary

The Norwich BID area has many shops, historic and civic buildings and some residential premises, there are valuable pockets of Green Space including 2 major Parks Castle Gardens and Chapelfield Gardens.

**Chapelfield Gardens** opened to the public in 1880 and now they are a popular meeting-place. There is a toddler and juniors' play area, somewhere for teens to hang out with their friends and areas for games of petanque, giant chess and draughts. The gardens are used, particularly in the summer months, for different outdoor events hosted by Norwich City Council including bandstand concerts, Lord Mayor's Celebration and funfair. There is a Friends of Chapelfield Gardens group who give tours of the Trees.

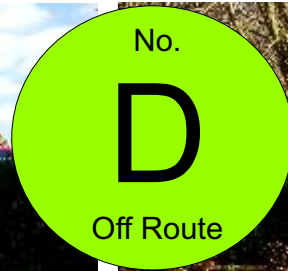
**Castle Gardens and Green** are in part of the original castle ditch. During the summer months, as part of the 'Theatre in the Park' programme, productions are staged. Castle Green lies next to the castle and provides excellent views of the city and has a small play area and was once the largest rooftop garden in Europe. City College Norwich students grow and plant up long troughs on the bridge for Museum staff to look after.

**The "Heavenly Gardens"** initiative sees many Church grounds in the Norwich BID area being managed and maintained by voluntary groups to provide attractive and biodiverse green space for shoppers and visitors to rest and enjoy colour and interest all year round.





# HORTICULTURAL ACHIEVEMENT



**Chapelfield Gardens Crocus Displays 15th March 2017**





# HORTICULTURAL ACHIEVEMENT

## Perennials and Sustainable Plantings



## Grapes Hill Roundabout Sustainable Perennials, Shrubs and Palms Sponsored by INTU Chapelfield 26th July 2016





# HORTICULTURAL ACHIEVEMENT





# HORTICULTURAL ACHIEVEMENT

## Trees - The Back Bone, Lungs and Beauty in The Heart of Norwich



### New Silver Birch Stand Golden Ball Street 25th April 2017

#### Norwich City Council Tree strategy overview

Norwich's trees The variety, number and quality of trees in Norwich make them a defining feature of the city. There are around 750,000 trees in the city, growing in a wide variety of locations including woods, parks, school grounds, hospitals, cemeteries, industrial and commercial areas, and streets. This means there are a number of landowners who are responsible for trees. For example, local authorities and other public organisations, church groups, private householders and businesses.

Everybody has an interest in developing a strategic approach to the management of trees.

Today, Norwich is the regional city of one of Britain's fastest growing regions, with an immediate urban population of 250,000. It is vital that we find an effective balance between the needs of a thriving city, and the welfare of our trees.

This strategy provides a framework for the management of all trees in the city. It lists the key strengths and weakness of the present tree stock, and also provides a vision for the future, setting out how this can be achieved through activities in the action plan.

Why does Norwich need a tree strategy? To ensure that trees remain a defining feature of the city there needs be a long term collective commitment from the many different landowners in Norwich who have a responsibility for trees, so we can continue to benefit from them. A strategy that promotes and expresses that commitment and provides sound practical direction is therefore essential to achieve this goal.

#### The Tree Strategy Ensures:

- That all matters relating to the management of trees in Norwich are dealt with in a co-ordinated way
- That all matters relating to the management of trees in Norwich are dealt with in an accountable manner
- That good practice is set out to raise tree management standards
- Improvements to the overall standard of tree care resulting in a healthier, more sustainable and safer tree stock
- That the environmental, economic and social benefits provided by trees is maximised
- Greater community involvement in the management of trees.

#### Vision

That the city of Norwich is recognised as a model of good practice, for the inclusive and sustainable way it manages its tree stock.

#### Strategic Objectives

The council has four key objectives in producing this strategy:

A: To enhance the city's natural environment.

B: To achieve a better co-ordinated approach to the management of the Norwich tree stock.

C: To improve the overall standard of tree care and create a healthier, safer tree population.

D: To inform and involve local people.



# HORTICULTURAL ACHIEVEMENT

## Trees For Norwich

This scheme allows people to sponsor a new tree in the city – whether it's to mark a special occasion, in memory of a loved one, or make a positive contribution to the local landscape and environment.

Anyone can sponsor a tree – both residents and non-residents, individuals and groups or companies.

### The cost of sponsorship is £250 covering:

Sourcing an appropriate tree. We choose a type of tree that is appropriate to where it will be planted and source it from a specialist provider to make sure it is free from disease and will grow well. Typically we will plant heavy standard planting stock and trees will be about 2.5m tall.

A choice of location. We aim to plant trees in the location requested but will discuss alternatives if this is not possible due to environmental, practical or legal reasons.

Planting the tree, which may include clearing concrete or paving slabs.

Securing the tree with a stake and ties and protecting it with a wooden tree guard.

Maintaining the tree by watering it for the first two years, carrying out young tree maintenance and inspecting the tree at least once every four years. Thereafter it will be looked after in line with our programme of tree safety inspection work.

A certificate including tree location plan, species of the tree and commemorative information, also the option to have your name and commemorative information added to the council's tree sponsors' page.

Trees are planted over winter, typically from October to March. Applications to sponsor a tree planting received between January and September can be planted in the same year's programme.

Applications received October to December will usually be planted in the following year's programme.





# HORTICULTURAL ACHIEVEMENT

## Spring Baskets and Planters

All Spring Barrier Baskets, Hanging Baskets and Containers continued to use Sustainable Growing Media as part of The Norwich in Bloom DEFRA RHS Britain in Bloom project grant awarded 2015-17.

Autumn/Winter 2016 and Spring 2017 baskets and containers all used a mixture of Shrubs, Ornamental Grasses and Spring Bedding plants all grown at our partners Hockering Nursery. The project completed at the end of 2016 but SGM plants still grown and used until, we will review production and making up of containers after compost stocks deplete.





# HORTICULTURAL ACHIEVEMENT





# HORTICULTURAL ACHIEVEMENT

## St. Stephens Church Grounds - Volunteers

St. Stephens Churchyard is not a new venture but much an ongoing one. It was developed in connection with the opening of The Chapelfield Mall in 2006 when landscaping started following the creation of a new pathway. The grounds have developed and grown over the years and are now a pleasure to all who walk through on their way to shop or waiting for a bus on Theatre Street. The grounds are a valuable floral oasis in the heart of a very busy city offering interest, beauty, enjoyment and peace to all who visit. Approximately 40,000 people walk through the churchyard every week.

### Friends of Norwich in Bloom and Its Your Neighbourhood

The Friends of Norwich in Bloom first supported St Stephens Church in 2007 when church member Victor Howe joined Friends of Norwich in Bloom Action Team and sourced plants from Norwich Prison Services and City College Norwich to create a flower bed. Volunteers Jo and Reg Chiddick joined Vic and are still actively involved, planning, planting and maintaining the churchyard with other volunteers.

### Drought Tolerant and Sustainable Plantings

A drought garden was planted by Norwich Union volunteers using ornamental grasses in 2007, additional flowering and drought tolerant plants grown as part of a **DEFRA RHS Britain in Bloom** grant 2014 to 2016 are used in the display and throughout the grounds, the display is low maintenance.

### Trees

St. Stephens Church has a rare *Euodia Fraxinifolia*. In 2015 a Golden Rain Tree, *Koelreuteria paniculata* was planted by George Ishmael and Sally Howe in memory of her father Victor Howe.

### Biodiversity

St Stephens has many old tombstones which amongst wild flowers, bird and insect boxes are managed to attract wildlife and provide habitat. Foxes, grey squirrels and many bird species frequent this area. Lavender hedges provide scent and attract butterflies and bees.

### Annuals and Floral Containers

Careful planning ensures that there are many kinds of bulbs, annuals, perennials and shrubs for constant flowering, we are very fortunate to have 12 Ambarrels around the church, 4 new ones in 2016.

### Education and Social Engagement

St Stephens Church welcomes students from Norwich City College Horticulture who grow and plant up the raised wall along the footpath twice a year.

### Youth and Family

A children's' gardening area, giant sunflowers, herb area and flower displays make St. Stephens an attractive place to spend some special family time.

### Church Cafe and Eating Area

As part of the church's Christian service, members of St. Stephen's run a cafe every weekday from 10 - 4 and on Saturdays 10 - 12. There is a policy of "pay what you can" and so those who can't afford to pay can get free one item of food and a drink each day, this has been much appreciated by the homeless throughout the winter. A few students with learning difficulties and adults with mental health problems work sessions in the cafe; a number of vulnerable people are brought to the cafe as a safe venue for an outing. The church building hosts the Food Bank distribution centre on two days a week; runs a Job Club for those who are long term unemployed. There is also a paved area near Vic's flower bed with picnic tables providing an enjoyable area for lunch or just for sitting and enjoying the floral displays around them.

### Awards and Recognition

2008 St Stephens won the local Norwich in Bloom cup for Best Churchyard in Norwich, presented by the late Will Giles celebrity Exotic Gardener. In 2015 Jo and Reg Chiddick were recognised for their FNIB and St. Stephens Church work achieving RHS Britain in Bloom Community Champion Awards.

### The Future

Vic Howe's dream was to have a floral ring around the church which has now been achieved. The original helpers continue to work in the churchyard with volunteers and supporters from the church. The project continues to be successful and gives so many people so much pleasure.



■ Friends of Norwich in Bloom and City College Norwich students joined members of the Norwich Centenary Rotary Club at the Assembly House in the city to plant crocuses for the organisation's Purple4Polio campaign. Pictures: NICK BUTCHER



## Digging for victory in battle to beat polio around world



■ Rosemary Linley, president of Norwich Centenary Rotary Club.

Spades? Check. Gardening gloves? Check. Bulbs? Check.

Crocus bulbs have been planted outside the Assembly House on Theatre Street, Norwich, in support of the Purple4Polio campaign.

Teams from the Norwich Centenary Rotary Club, Friends of Norwich in Bloom, and learning difficulties students from City College Norwich turned out in force to plant up the garden in front of the Assembly House.

Purple4Polio is a hugely successful international campaign run by Rotary clubs across the world.

Working in partnership with the Bill and Melinda Gates Foundation, the club has helped aid the reduction of polio to just two countries. Their ongoing work will continue to reduce this number, and make sure polio never returns.

Rosemary Linley, president of the Norwich Centenary Rotary Club, said:

**Eleanor Pringle**

eleanor.pringle@jlfhant.co.uk

"The crocus idea comes from the fact that children that have been vaccinated in some areas are marked with a purple blob on their hand, so that vaccinators know they are not at risk."

City College Norwich student Brandon Payne, 18, explained how he was involved in the project: "We sort the 15,000 bulbs we are sent in our numeracy lessons. We count them out and then label them. And then we come and plant them."

"There are 1,000 in the ground here. I really enjoy doing this."

A total of 20,000 crocuses will be planted around Norwich at Jenny Lind Park, St Margaret's Church, St Stephen's Church, and Valley Primary School, as well as Mile Cross Primary School, Norwich Train Station and Colman Hospital.



■ Getting stuck in to plant crocuses at the Assembly House in Norwich for the Purple4Polio campaign run by Rotary clubs.





**Rotary International**

## Afternoon Tea

Will be served  
By  
Rotarians from Norwich and District  
in  
**St. Stephen's Church,**  
Chapelfield, Norwich  
On  
**Wednesday, 8th March**  
2.30 - 4.30 pm




Please join us to help with the final push to rid the world of Polio  
Contact Eirian on 07786 707928 for details.



# HORTICULTURAL ACHIEVEMENT

No.

9

On Route

**St. Stephens Church Goggle Aerial Image**



**Volunteers Plant Crocus Ruby Giant Purple4Polio 24th October 2016**



# HORTICULTURAL ACHIEVEMENT



**Crocus Tea Party 8th March 2016**



# HORTICULTURAL ACHIEVEMENT

**St. Stephens Church Wildflower Area 19th April 2017**



**Jo and Reg Chiddick  
31st May 2017**

**Drought Tolerant Spring Display  
5th April 2017**



**Victor Howes Flower Bed  
5th April 2017**



# HORTICULTURAL ACHIEVEMENT

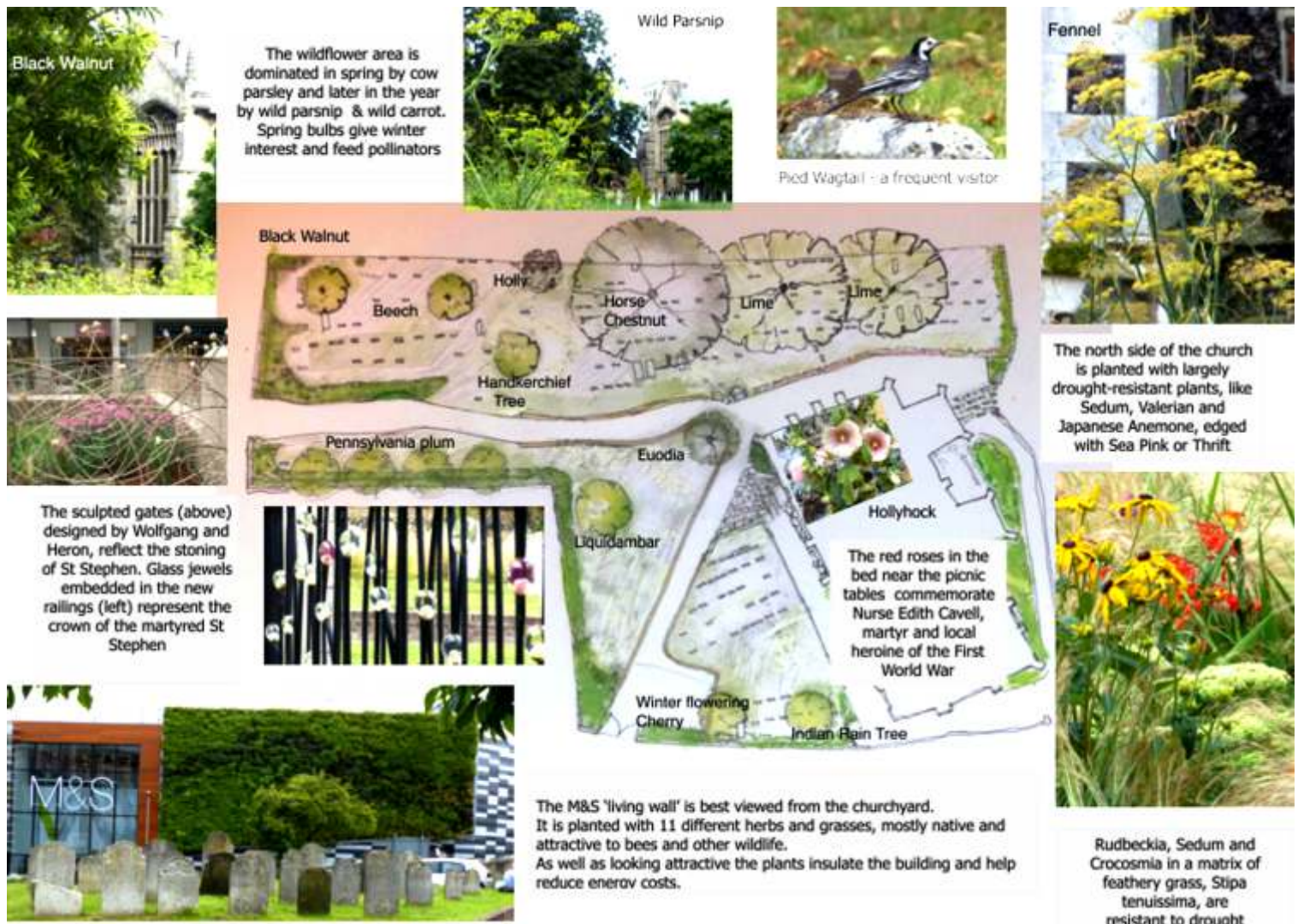
## Heavenly Gardens - A Vision For The Future

There are 32 medieval churches surviving in Norwich - the biggest collection of pre-reformation churches in northern Europe. Only 9 of these churches are still used for their original purpose of worship; the remainder are redundant and looked after by the Norwich Historic Churches Trust and others, who aim to find new uses for them. Every church has a churchyard and these small green oases, scattered throughout the city centre, play an important part in the street scene of Norwich. Although their value is recognised, many are difficult to access and have an air of neglect about them.

The churchyards can be a productive focus for community effort, some of them already have active groups of volunteer gardeners, the sheer amount of community effort put into the churchyard of St. Stephens has contributed to Norwich winning a number of "in Bloom" awards. Other churches with active groups in the Norwich BID boundary are All Saints Green and St. Peter Mancroft Churches.

Following an initial funding award of **£12,000** from Town Close Estate Charity, a further award of **£8,000** has been awarded in 2017 to complete a pilot project that will demonstrate the value of the Heavenly Gardens approach to managing the churchyards in a consistent way with community activity at its heart. The aim is to create a botanic garden on a series of dispersed but neighbouring sites where people can learn about the importance of plants, whether it be through study, gardening or art. St Margaret's has continued to be a focus of activity this year, with the creation of a medieval flower garden. Also All Saints, with the creation of an international partnership garden recognising the garden traditions of our twin cities: Koblenz and Rouen. A bee garden has been planted at St Gregory's as part of the 2017 Dandifest and funded by the Norwich Lanes traders.

## Below - St. Stephens Church Leaflet - One of George Ishmaels recent Heavenly Gardens Trails - Mancroft can be found in Appenidces





# HORTICULTURAL ACHIEVEMENT

## Strangers Hall Museum - 17th Century Knot Garden Volunteers

The volunteer gardeners at Strangers Hall are an integral part of the Museum and have been developing and maintaining the garden over several years.

The border of heritage roses, donated by Peter Beales, is in full bloom in mid-summer and is a delight for visitors, staff and volunteers. The volunteers make sure it is always looking at its' best.

The knot garden, very popular with visitors, is best viewed from the Great Chamber overlooking it from a first floor window. The box hedges are cut during the summer by an expert volunteer.

The Herb Garden is another important part of the garden and the current project of the Garden Team is to replace some of the short lived herbs and to add to the collection of medicinal herbs, culinary herbs and dye plants most of which would have been growing in medieval times or earlier.





# HORTICULTURAL ACHIEVEMENT

## City College Norwich - Plant Production and Plantings Partnership

During the terms between September 2016- July 2017 Students produced plants for civic and community: **17076** Summer and Autumn Bedding Plants - **8579** Perennials and Grasses - **856** Alpines

In the **Norwich Bid Area** Planted up - Castle Bridge and St. Stephens Church and grew and supplied plants for The Memorial Gardens, City Hall, Golden Ball Street and The Assembly House.

Norwich Evening News | Tuesday, May 16, 2017

### Sheriff's college tour



From left: vice-chair and treasurer of Trustees Friends of Norwich in Bloom, Ed Purnell, Sheriff of Norwich Richard Marks, Jo Chiddick St. Stephens Church volunteer and Lady Sheriff Maeve Marks with City College students. Picture: TERRY C BANE

#### **The Sheriff and Lady Sheriff of Norwich have been given a tour of City College Norwich's Living Classroom greenhouses.**

Sheriff Richard Marks and Lady Sheriff Maeve Marks were treated to the display of 20,000 summer bedding and perennial plants that staff, and students with learning difficulties have

been growing.

The plants are being grown for civic and community projects across Norwich including this years national RHS Britain in Bloom Norwich BID finalists entry.

More than 2,000 Geraniums Moulin Rouge have been grown by the students and will be planted the along the wall of St Stephen's Church

and on Golden Ball Street.

The Sheriff is an Ambassador for Norwich in Bloom which has been adding colour to the city centre with colourful plant displays for over 30 years.

The students will be hosting a surplus plant sale at the college on Wednesday, May 17 and Thursday, May 18.



# ENVIRONMENTAL RESPONSIBILITY

## Norwich City Council's Published Environmental Policy

The council's environmental policy will play a key role in working towards sustainable development because the health and well-being of our environment is crucial for providing us all with a good quality of life, both today and for years to come.

**The policy** It is our policy to meet our national and international legislative obligations, to develop local sustainable communities, enhance the local environment, deliver environmentally-friendly services and enforce environmental legislation to help stem the depletion of finite natural resources.

We are committed to preventing pollution of the environment through compliance with legislation and the continual improvement of environmental performance. We will also monitor our resource use, by:

- increasing energy efficiency in council-owned property
- promotion of domestic energy efficiency
- reducing the amount of waste sent to landfill
- increasing recycling opportunities
- reducing consumption of paper in council activities
- reducing consumption in fuel in council operations
- reducing CO2 emissions from council operations by 2.2 per cent per year to achieve a 40% reduction in emissions by 2020
- reducing per capita carbon emissions by 2.2% per year till 2019
- preventing groundwater pollution and contamination of land
- protecting and enhancing of habitat and biodiversity
- enhancing of the quality of the built environment
- environmental considerations laid out within the procurement strategy.

## Contract Management - Norwich Norse Environmental

### Joint Venture Partnership

In 2013 Norwich City Council entered into a joint venture agreement with Norse Commercial Services to deliver its grounds maintenance, tree works, street cleansing and associated services through a jointly owned company Norwich Norse Ltd.

### Strategy

A key factor of the joint venture is its ability to adhere to the strategic aims of the City Council and, in particular its stated objective to ensure that Norwich is a safe and clean city

### Benefits

The benefits of the new arrangement include:

- Shared values – Norse Commercial services being publicly owned by Norfolk County
- Council shares the same public service ethos as the city council
- Caring Approach – a shared commitment to social inclusion and equality
- Stability – having gone through several formats over the last few years, this will bring stability, a new brand and culture that represent value for money and high standards of customer satisfaction
- Boosting the local economy – supporting local businesses through the supply chain

### Future Development

The joint venture allows scope for future development as well as the opportunity to adapt the services to the needs of our local communities. There will be opportunity to work in partnership with our communities through local neighbourhood agreements so that our services are delivered with the support of local people. There will also be opportunity to deliver flexible services with greater environmental awareness rather than through traditional fixed contract specifications. This has already proved beneficial through such activities as sowing roundabouts with wild flower mixes rather than traditional "council bedding" schemes, altering cleansing schedules to respond to the needs of the local residents, use of resource across services rather than being assigned to one particular service. This is exemplified by the combining of the work to empty litter bins in our parks and on the streets. Traditionally there were always two crews, now there is one with the flexibility to go where the bins are rather than being governed by the service type it was delivering. As the partnership develops it is expected that further opportunities will be presented to ensure our services are delivered to where they are needed and with the local community at the forefront.



# ENVIRONMENTAL RESPONSIBILITY

## Street Cleansing and Waste Management

### Waste container recycling

All damaged and unserviceable waste receptacles such as wheelie bin, green recycling boxes, tuff tubs etc are sent to a company called Eco-Aegis for recycling. They are cleaned, shredded, processed and are manufactured into new wheelie bins or other products.

### Street cleansing

Norwich City Centre is a clean public space for all to enjoy. The effectiveness of the cleansing systems and management is monitored using the same methodology as the now obsolete National Indicator (Ni195). The inspection monitors the percentage of sites that fall below a Grade B for cleanliness, using grades based on those set out in the Code of Practice for Litter and Refuse (COPL&R). Cleanliness is measured in terms of two key indicators, litter and detritus and their grades are added together to calculate the overall National Indicator. The grading system is designed to reflect the way that a member of the public would perceive the local environment. The survey results for 2012/13 indicate Norwich is a clean city that is maintaining the urban streetscape well.

### Green Waste

Norwich City Council provides an opt-in garden waste (Brown Bin) service which costs £46.00 per bin for 25 scheduled kerbside collections per year. The take up of the garden waste scheme has been excellent with well over 9141 properties taking advantage of the scheme. In 2015/16 3,227 tonnes of garden waste was diverted from landfill for composting, In 2016/17 3,493 tonnes of garden waste was diverted.

### Food Waste

In October 2010, Norwich City Council provided a weekly kerbside food waste collection service to around 50,000 households in the city. Householders place food including raw and cooked food waste in a 23-litre food caddy for collection for eventual anaerobic in-vessel composting. In 2016/17 approximately 2,038 tonnes of food waste was diverted from landfill for composting.

### Recycling Revolution

In October 2014 we started to collect the following additional items in the blue bin for recycling, as a result of improvements made at the materials recycling facility where Norwich's recycling is sorted.

- Glass bottles and jars
- Plastic food pots, tubs and trays
- Cartons, like those used for soups and juices

## Street Cleansing St. Giles Street 4th May 2017



### Bring Banks

Mini recycling banks (MRB's) are at 10 locations across the city, Castle Meadow, Theatre Street, Cleveland Road, Upper St Giles, Hay Hill/Weavers lane, St Benedict's, Little London Street, St Andrews Street, Norwich Bus Station and Vauxhall Street. The bins make it simpler to 'recycle on the go'. All locations have a dedicated glass bank and another for all dry recycling such as card, paper, cans, plastic bottles and aerosols.

### Recycling of Street Litter

Norwich City Council has recently installed new recycle litter bins on St Stephens, Red Lion Rampant Horse Streets, Eaton Park and Castle Gardens allowing members of the public to recycle their litter. The bins have separate containers for litter and mixed recycling of plastic bottles, cans, paper and cardboard.

### Recycling Performance

The recycling rate for 2016/17 is **38.8%** a **0.3%** increase 2015/16. Our dry-recycling (i.e. recycling of paper, card, tins, plastics and glass) is now just over 30% making us one of the highest recyclers in the country.



# ENVIRONMENTAL RESPONSIBILITY

## Energy, Recycling, Resource and Waste Management - INTU Chapelfield

intu Chapelfield has 530,000 square feet of retail space with more than 80 shops, cafes and restaurants. The centre is part of intu Properties plc, owner of some of the largest and best known out of town shopping centres in the UK. **But we're a little different.**

In the centre of a historic city - Part of a thriving retail community - Top ten shopping destination (Experian Retail)

### WASTE

Each waste bag is opened by the recycling team before being hand sorted into 19 waste streams:

**Food Oil, Light bulbs Batteries – domestic and commercial, Textiles, Sanitary waste, Hazardous Wood, Metal, Hard plastics, Soft plastics, Paper Cardboard, Dry, mixed recyclables, Printer cartridges, Aerosol cans, WEEE, Take-away cups, Waste to energy**

Today, 22% of our tenants are coffee shops and food outlets and this percentage is likely to grow. intu Chapelfield produces around 260 tonnes of food waste per annum (between 20 to 28 tonnes per month)

### AEROSOL CANS

We've invested in kit that allows us to depressurise any size of aerosol can; turning it from a piece of hazardous waste into a valuable recyclable material.

### WASTE TO ENERGY

Any non-recyclable items are taken by a specialist waste to energy sub-contractor. The waste is made into Residual Derived Fuel (RDF) blocks which are sold to other parts of Europe. Intu Chapelfield selected a national contractor that has a local site – ensuring a good working relationship.

### BALING

In 2012, intu Chapelfield had a single baler and baled only one material. In 2013 we purchased a further, mill-sized baler. We now bale cardboard, hard plastics, soft plastics, take-away cups and paper.

**£9,284** – the rebate we generated in 2014 by supplying materials in bales

**92%** – average rate of contractor waste being recycled

**£1,500** – rebate value of contractor waste

**848** – the number of tonnes of compost our food waste generates

**488** – the potential reduction in tonnes of CO2 released due to our approach to food waste

**6** – the number of dedicated jobs our recycling plant has created

**£875** – the money saved by our approach to dealing with aerosol cans (plus a reduction in CO2 emissions/transport costs)

### AWARDS WON

**2012** intu Chapelfield wins Carbon Reduction Award at Business In The Community Regional Impact Awards; and is short listed in retail category at the **National SUSTAIN Awards**

**2013 - Guardian Sustainable Business Award Win**

**2014 - National Zero Waste Awards Gold Win**

**2015 - Retail Recycling Award at National Awards for Excellence in Recycling**

**2015 - short listed SCEPTRE Waste Management Award**

Jo Bates - Operations Manager intu Chapelfield



No.

11

On Route



# ENVIRONMENTAL RESPONSIBILITY

## Energy, Recycling, Resource and Waste Management - Castle Mall

With regards to Waste Management here at Castle Mall all our waste is Recycled or Waste to energy.

We recycle, general waste (Dry Mixed Recycling) , Cardboard, Wet Waste/Food, Metal and Glass. We send nothing to landfill so last year 2015-2016, 100% recycled - TOTAL 435.4 tonnes, 66% of which was segregated on site. So far this year 109.1 tonnes has been recycled.

On Energy Saving we are constantly working on this, we have over the 2 years upgraded our lights in both car parks and back of house areas to sensor controlled. In the car parks alone we have made a saving of 80.8% a year. We have also upgraded the escalators, these run slowly until someone steps on them and then they ramp up to full speed.

Sarah Smith - Operations Manager Castle Mall Management

## Energy, Recycling, Resource and Waste Management - Anglian Buses

### Sustainability

As a responsible transport provider to the East Anglian community, we take great pride in sustaining ethical working practices for the good of our environment and our customers throughout our day-to-day operations. We are proud to say that we are the first company to operate We are proud to say that we are the first company to operate biogas buses on the road in the UK, as part of our strategy to improve the customer experience whilst simultaneously helping to reduce our carbon footprint through Norfolk and Suffolk. Our environment will benefit from up to 96% fewer emissions\* and cleaner air.





# ENVIRONMENTAL RESPONSIBILITY

## Improving Norwich Cycleways

Cyclists in Norwich are beginning to see the benefits of £14.1 million worth of funding across the city's seven cycle routes, called 'Pedalways'.

### Phase one

The first wave of funding for the Cycle City Ambition project saw work begin on £5.7 million of improvements to Norwich's eight-mile pink pedalway and the connections leading to it.

It is one of seven routes in the city's cycle network and crosses the city from the Norfolk & Norwich University Hospital and UEA, through the city centre, to Heartsease and Broadland.

### Phase two

The second wave of funding for the project saw the council secure an additional £8.4m of funding to make further improvements to cycle routes across the city.

Two of the other seven cycle routes to benefit from this grant include the yellow pedalway from Norwich International Airport to Lakenham and blue pedalway from Sprowston to Wymondham.

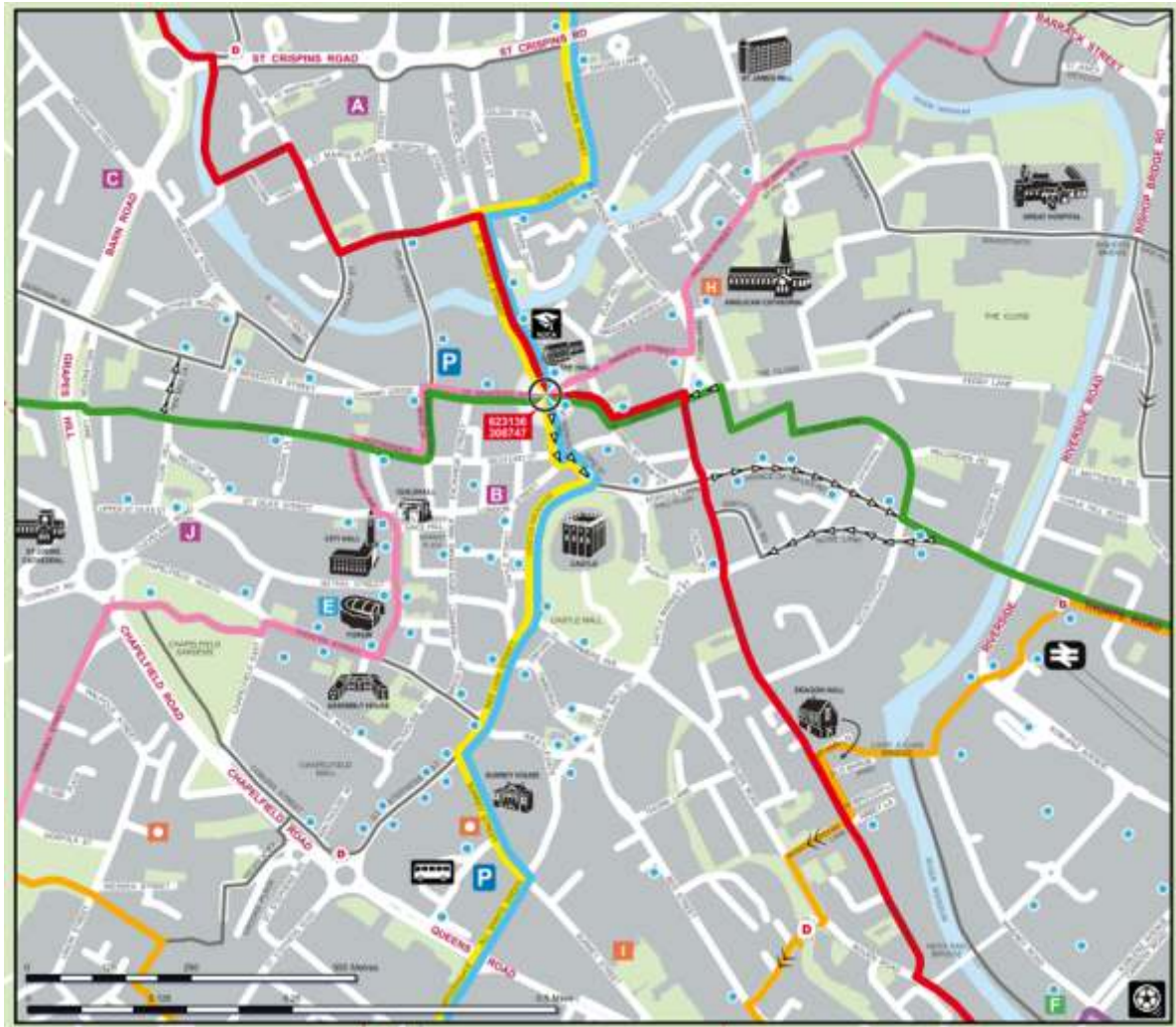
### Plan your cycle journey

Norwich has seven colour-coded cycle routes – totalling 58 miles – known as pedalways.

Five of these radiate out from the city centre and two more form an inner and outer circuit around the city and together with local routes these offer a comprehensive network of cycle routes.

A pdf version of the Norwich cycle map, which shows the seven pedalways across the city can be downloaded Plan your journey on the go with the Cycle Streets smartphones app or online <https://norwich.cyclestreets.net/>

**Red:** Drayton to Whitlingham - **Green:** Bowthorpe to Broadland Busines Park  
**Pink:** N&N Univerity Hospital to Heartsease - **Blue:** Cringleford to Sprowston  
**Yellow:** Lakenham to Norwich Airport - **Orange:** inner circuit - **Purple:** outer circuit.





# ENVIRONMENTAL RESPONSIBILITY

## Heritage, Pride of Place, Art in The Landscape, Street Furniture and Signs

The Norwich 12 are the most iconic buildings in Norwich, forming an internationally important showcase of English urban and cultural development over the last 1,000 years and one of the UK's finest collection of individually outstanding heritage buildings from the Norman, medieval, Georgian, Victorian and modern eras. Many are free to enter, some charge entrance fees and others can only be explored during Heritage Open Days. In addition, venues are used for one off special events as well as musical performance and festivals. Most of The Norwich 12 are in the heart of the city and are enhanced with floral and sustainable plantings.

6 of The Norwich 12 Buildings are within the Norwich BID Boundary: Norwich Castle - The Guildhall - The Assembly House - Surrey House - Marble Hall - City Hall - The forum

### Heritage Buildings, Memorials and Art within the Norwich BID Boundary

Castle Meadow South African War Memorial

Castle Meadow Dr. Harrington Wyndham Darell Horse Trough Memorial

Chapelfeld Gardens William Kemp Carving

Golden Ball Street "City of Stories" Mural by Poppy Cole Norwich University of The Arts (April 2016)

Hay Market Hill Thomas Brown Statue and Sculptures

Opie Street Amelia Opie Statue

Rouen Road Prospect House (Archant) Bronze Sculpture

St. Peters Street Memorial Cenotaph

Surrey Street Statues - William Talbot and Samuel Bignold

Surrey Street - Gaea Bronze Mother Earth

The Old City Walls

**Norwich is very proud of its heritage and the people who made our "Fine City"**

## Notcutts and M&N Landscaping Partner and Sponsor Spring Planting Memorial Gardens 23rd March 2017



No.

5

On Route



# COMMUNITY PARTICIPATION

## Friends of Norwich in Bloom - Supporting Norwich BID Campaign 2017

Friends of Norwich in Bloom through Terry Bane, George Ishmael, Ed Purnell, Jo and Reg Chiddick are supporting and helping Norwich BID with their Anglia in Bloom and RHS Britain in Bloom BID Finalist entry.

### The Friends of Norwich in Bloom Registered Charity no. 1141012

The Charity's objects (the Objects) are: To promote horticulture for the benefit of the public generally and especially those who live in or visit the city of Norwich by providing or encouraging the provision of displays of flowers, shrubs, trees and landscapes in places visible to the public.

### Over 30 Years of The Friends of Norwich in Bloom 1986-2017

In 1986 Norwich City Council encouraged the Norwich community to take ownership and run the local Norwich in Bloom competition, this happened under the first Chairman of Norwich in Bloom **Chris Dunn** along with Vice-Chair **Graham Hawker**, Secretary **Linda Varnon** and Treasurer **Brian Buller** they formed and ran the Norwich in Bloom Association with a committee.

The first community run Norwich in Bloom competition was during summer 1986, supported by Notcutts and Allen and Page, at that time **Terry Bane** was employed by Norwich City Council at Earlham Park Greenhouses as Nursery Manager and was invited to join the committee, as were **Jo and Reg Chiddick** and **Alma Simmonds** all four are still active and Life Members.

In 1987 The Norwich in Bloom Association developed into The Friends of Norwich in Bloom as an independent voluntary committee with a written constitution promoting floral and environmental initiatives and continued to run the local summer competitions.

During the early years the committee met regularly in the Guildhall, Elliot House and City Hall.

Chris Dunn passed the chair to Graham Hawker, then **June Revell** and then:

In 1999 to **Bill Webster** the In Bloom initiative was re-launched with vigour, new members, annual action plans and budget, membership and interest increased with an Anglia in Bloom Best City win in 2000.

From 2003 The Friends meetings took place at The Royal British Legion, Aylsham Road, sometimes at **Rita McCluskey's** The Adam and Eve P.H., The Assembly House and more recently Brook Hotel, Bowthorpe.

Bill achieved so much success for Friends of Norwich in Bloom as Chair and handed over to Terry Bane in 2007 when Bill became Ambassador until we sadly lost Bill in 2014. Terry Bane became the second Ambassador in memory of his friend and mentor Bill in 2015 for one year before retiring as a Trustee in 2016.

Terry Bane was Chair for 1 year in 2007 then passed to **Julie Brociek-Coulton** for 2 years, Terry Bane became Chair again for 4 years from 2010 – 2014 then **Steve Buckle** for 1 year, 2015 and currently The Chair of The Friends of Norwich in Bloom Action Team is **Keith Driver**.

During 2010 Terry Bane strongly encouraged The Friends to become a registered charity and form a Trusteeship the first Chair of Trustees was Terry Bane 2010-12, **Michael King** 2012-14 Terry Bane 2014-16 and presently **Gareth Stone** 2016-, **Ed Purnell** is Vice-Chair of Trustees and Treasurer.

Friends of Norwich in Bloom also has a President, The first from 2005 till present is **Michael King** our current Vice-President is **Richard Marks**, John Lewis MD and Sheriff of Norwich 2016-17.

### The Future

The Friends of Norwich in Bloom have a strong group of Trustees, Action Team, Partners, Members and Business Members – our future is assured, we plan to continue running the local Norwich in Bloom environmental competitions for school, residents, organisations and business to take part and be involved helping to keep our city looking, attractive, clean, green and environmentally friendly as well as encourage and provide wildlife habitat for our native species.



# COMMUNITY PARTICIPATION

## Promoting Norwich, The Friends of Norwich in Bloom and Environment

**Norwich BID** is instrumental in developing innovative destination marketing campaigns and ideas that put Norwich at the front-of-mind for visitors, tourists and businesses across the UK and abroad. Our campaigns look to reach potential visitors using a range of media. This includes the use of social media, web-based and mobile technologies to allow interactive dialogue between organisations, communities and individuals.

**Norwich: The City of Stories** Working in partnership with [www.visitnorwich.co.uk](http://www.visitnorwich.co.uk) one such destination marketing campaign is "Norwich The City of Stories" Building on Norwich's status as a UNESCO City of Literature, this campaign covered themes, telling some of Norwich's most amazing tales, uncovering the city in a series of stories to bring it to life for those who love the city and for those who have never been.

**Discover Norwich - the city centre App** is the one stop shop for everything Norwich FREE to download on iOS and Android the app features detailed events listings, an interactive map, city trails and a directory by interest. Norwich BID Businesses are featured on the app for free.

**City Centre Festivals and Events** Norwich BID supports and helps to promote a number of events and projects throughout the year including; **Christmas in Norwich - Norwich Easter Egg Hunt - ShopNorwich - Norwich Fashion Week - Norwich City of Ale - Norfolk Food and Drink**



**Making Dragon Cress Heads  
and Colouring Competition  
the forum 23rd April 2017**

### Friends of Norwich in Bloom Notice Board – Theatre Street

Jo and Reg Chiddick show the activities of the Norwich in Bloom initiative throughout the year with information and photographic displays updated monthly in the Norwich in Bloom cabinet in the heart of the city at Theatre Street outside the Assembly House and Theatre Royal adjacent, thousands view daily.

**Norwich in Bloom Web Sites** [www.norwichinbloom.co.uk](http://www.norwichinbloom.co.uk) [www.friendsofnorwichinbloom.org.uk](http://www.friendsofnorwichinbloom.org.uk) and **Face Book** Many of the stories and articles we write are also available on our website [www.norwichinbloom.co.uk](http://www.norwichinbloom.co.uk), where we have links to the Anglia, RHS Britain in Bloom, Communities in Bloom and LivCom websites as well as links to sponsors, supporters and local organisations.

### Brochures, Leaflets, Signage and Banners

We aim to mention all our sponsors, partners, supporters, Anglia, RHS Britain and Communities in Bloom as well as LivCom at every opportunity and use logos in our literature and on our signage and banners.



# COMMUNITY PARTICIPATION

## Local in Bloom Competitions

Notcutts generously continue to support and sponsor The Friends of Norwich in Bloom Schools and Summer Local Environmental Competitions providing £3,000 to run the many categories and provide Garden Centre gift vouchers as prizes for winners.

Within The Norwich BID Boundary there are mainly entrants from the Commercial and Heritage Sections including, St. Stephens Churchyard Volunteers, this year Jo and Reg Chiddick have been liaising with the only school within the Norwich Bid boundary Surrey Free School to be part of the local competitions and campaign..

## Schools Local Competition Presentation Evening at City Hall November 2016



No.

4

On Route

### COMMERCIAL AND INDUSTRIAL SECTION

<input type="checkbox"/>	<b>1. Commercial Premises &amp; Containers</b> (Trophy and £25 voucher to winner)	Includes shops, offices, banks, garages, hotels, hospitals, stations etc. Overall appearance.
<input type="checkbox"/>	<b>2. Public House</b> (Trophy and £25 voucher to winner)	Front and rear gardens and car parks with public access.
<input type="checkbox"/>	<b>3. Sheltered Housing Schemes (Residents)</b> (Trophy and £25 voucher to winner)	The whole complex will be judged.

### PRIVATE RESIDENTIAL SECTION

<input type="checkbox"/>	<b>4. Floral Displays in Containers</b> (Trophy and £25 voucher to winner)	All floral containers including hanging baskets, window boxes, tubs, wheelbarrows etc. will be assessed.
<input type="checkbox"/>	<b>5. Floral Gardens of any size</b> (Trophy and £40 voucher to winner)	The front garden must be visible from public highways; side front gardens may be included.
<input type="checkbox"/>	<b>6. Wildlife Garden for Birds, Bees, Butterflies</b> (Trophy and £25 voucher to winner)	Show and demonstrate how your garden attracts, sustains and provides habitat for native wildlife.

### GROW YOUR OWN SECTION

<input type="checkbox"/>	<b>7. Best Allotment Newcomer</b> (Trophy and £25 voucher to winner)	Open to all new Norwich allotment holders in their first year only.
<input type="checkbox"/>	<b>8. Best Allotment</b> (Trophy and £25 voucher to winner)	Open to all Norwich allotment holders.

### SPECIAL SECTION

<input type="checkbox"/>	<b>9. Gardeners with disabilities – Individual</b> (Trophy and £25 voucher to winner)	Gardens or allotment plots maintained by individual gardeners who are disabled
<input type="checkbox"/>	<b>10. Gardeners with disabilities – Group</b> (Trophy and £25 voucher to winner)	Gardens or allotment plots maintained by groups run for those who are disabled
<input type="checkbox"/>	<b>11. Community gardens and growing projects</b> (Trophy and £25 voucher to winner)	Community gardens or allotment plots, looking at both the range of people involved as well as the quality of what is grown, either amenity or produce

### HERITAGE SECTION

<input type="checkbox"/>	<b>12. Best Kept Churchyard Award in Norwich</b> (Trophy and £25 voucher to winner)	Best kept Churchyard in Norwich.
--------------------------	--	----------------------------------

### NOTCUTTS SPONSOR PREMIER AWARDS

<b>13. Summer Newcomers Award</b> (Trophy and £25 voucher to winner)	Chosen from all first time entrants in any of the above sections.
<b>14. Summer Super Award</b> (Trophy and £50 voucher to winner)	Can only be entered by the winner in any category of the summer 2015 competitions.
<b>15. Norwich in Bloom Summer Overall Winner</b> (Trophy and £75 voucher to winner)	In order to highlight excellence, an overall winner will be selected from the winners of categories 1 - 12



# COMMUNITY PARTICIPATION



CELEBRATING  
**120**  
YEARS - 1897-2017

**Notcutts**  
*Helping gardeners since 1897*



## THE FRIENDS OF NORWICH IN BLOOM IN PARTNERSHIP WITH NOTCUTTS GARDEN CENTRE SCHEDULE AND ENTRY FOR SCHOOLS COMPETITIONS 2017

The Trustees, President and Friends of Norwich in Bloom invite Norwich Schools to enter the 2017 environmental competitions. Details of the entry categories are explained below. Please tick the categories you wish to enter – there are not any entry fees. The rules for these competitions, entry form and contact details are on the reverse of this entry form.

### SPRING FLOWERS

☐

1. DAFFODIL COMPETITION at NOTCUTTS GARDEN CENTRE, Daniels Road w/c 20 March 2017 – details TBC

All Norwich schools are invited to take part in our Daffodil Competition. Date and time to be confirmed soon! Just bring 12 freshly cut Daffodils from your school garden to the Notcutts Garden Centre. The Daffodils will be judged by the Lord Mayor of Norwich Cllr. Marian Maxwell and Mr Nick Bugden manager of Notcutts.

### SUMMER FLORAL GARDENS, CONTAINERS, VEGETABLES AND FRUIT

Judging Monday 3<sup>rd</sup> July – Friday 7<sup>th</sup> July 2017 - **Entry Closing Date Saturday 10<sup>th</sup> June**

☐

2. **Best School Floral Containers**  
(Trophy and prize to winning School)

Create, grow and show your favourite hanging basket, window box, floral planter or flower tubs.

☐

3. **Best School Conservation Garden**  
(Trophy and prize to winning School)

Create a Conservation garden to provide a habitat to encourage wildlife.

☐

4. **Best School Fruit and Vegetable Garden**  
(Trophy and prize to winning School)

Create an allotment plot or garden to grow fruit and vegetables. And let us know your biggest vegetable you have grown.

☐

5. **Super Award**  
(Trophy and prize to winning School)

All School first prize winners of last year can enter this category.

### LATE SUMMER/AUTUMN GIANT SUNFLOWERS AND PUMPKINS

**Email Sunflower Height (by 8 Sept) and Pumpkin Girth (by 13 Oct) to [jewills064@aol.com](mailto:jewills064@aol.com)**

☐

6. **Tallest Giant Sunflower**  
(Trophy and prize to winning School)

Grow the Tallest Sunflower in Norwich

☐

7. **Biggest Giant Pumpkin**  
(Trophy and prize to winning School)

Grow the Biggest Pumpkin In Norwich

☐

8. **Best School Scarecrow**  
(Trophy and prize to winning School)

Enter one Scarecrow into our Scarecrow competition - Let us know your scarecrow's name!

### ALL YEAR ROUND GARDENING AND ENVIRONMENTAL ACTIVITY

Judging Monday 3<sup>rd</sup> July – Friday 7<sup>th</sup> July 2017 - **Entry Closing Date Saturday 10<sup>th</sup> June**

☐

9. **Best School Record and Diary of Gardening and Environmental Activities all year.**  
(Trophy and prize to winning School)

Produce a record of your activities and achievements throughout the year; show your plans, pictures, who were involved including pupils, teachers and parents.

### NORWICH IN BLOOM OVERALL SCHOOLS WINNER

**THE AMBEROL TROPHY** and prize to the winning School - The School with the most points gained from entering into the Schools Competition categories will become the 2016 Schools Overall winner

#### Points Awarded

**Entry into each category = 1 point**

**1<sup>st</sup> Place = 4 points**

**2<sup>nd</sup> Place = 3 points**

**3<sup>rd</sup> Place = 2 points**



# COMMUNITY PARTICIPATION

## Partnerships and Sponsorship - The Assembly House and Notcutts



The Assembly House is in the heart of Norwich and the Norwich BID boundary. Trustees and staff have been working in partnership and supporting The Friends of Norwich in Bloom from around 1998.

Through partnerships hanging baskets, containers, plants and advice are provided to The Assembly House who kindly host Bloom events and activities including the 2016 international Communities accommodation and this years regional Anglia in Bloom and national RHS Britain in Bloom lunch buffets and rooms.

Notcutts celebrated their 120th anniversary in 2017 as part of the celebrations and the opening of their refurbished restaurant Notcutts kindly hosted this years annual Lord Mayor and Sheriff of Norwich Tea Party for over 60 Business Members, Sponsors, Partners, Friends of Norwich in Bloom Team, Volunteers and guests.

As well as sponsor the local Norwich in Bloom Environmental Competitions, **Nick Bugden** of Notcutts has become a Friends of Norwich in Bloom Trustee and with **M&N Landscapes** has replanted the Memorial Gardens between City Hall and Norwich Market with donated and City College Norwich plants.





# COMMUNITY PARTICIPATION

## Sponsorship, Grants, Donations and Fund Raising

Current FNIB Sponsor/Partner/Supporting Type of Support Within the Norwich BID Boundary	Value of Support
BARFORD VAN HIRE	Free Mini Bus Vehicle Use £3,000
CIM – Creative Image Management	Free Signage and Design Work £3,000
CITY COLLEGE NORWICH	Free Plants and Planting Works £12,000
HOCKERING NURSERY	Free Hanging Baskets for FNIB £3,000
HUSSEY KNIGHTS	Free Portfolio Printing £200
NORWICH ACCOUNTANCY SERVICES	Free Accountancy £1,000
NORWICH BID	Campaign Support £250
NORWICH CITY COUNCIL	Grant £5,000
NOTCUTTS and M&N LANDSCAPING	Free Plants Planting Works & Competition Sponsor £5,000
THE ASSEMBLY HOUSE	Free Room Hire and Buffets £3,000
<b>TOTAL VALUE £32450</b>	

### Current FNIB Business Members within the Norwich BID Boundary Donating £100 Each Year.

CASTLE MALL  
CIM – Creative Image Management  
CONTACT CARE – SAFFRON HOUSING  
EAST OF ENGLAND CO-OP  
INTU CHAPELFIELD  
MOVING IN  
THE FORUM

### Current Roundabout and Barrier Basket Sponsors Through The Norwich City Council “Norwich in Bloom” Scheme within the Norwich BID Boundary

5 STAR TAXIS  
ABC TAXIS  
ARBONS CARPET AND FLOORING  
ASTON SHAW  
CIM – Creative Image Management  
CONTACT CARE – SAFFRON HOUSING  
EAST OF ENGLAND CO-OP  
FLORANOVA  
FRUITFUL MEDIA/RAISE YOUR PROFILE  
HATCH BRENNER SOLICITORS  
HUSSEY KNIGHTS  
INTU CHAPELFIELD  
JOHN LEWIS PARTNERSHIP  
JNR BUILDING and MAINTENANCE LTD  
KINGS & CO  
NORWICH ACCOUNTANCY SERVICES LTD  
NORWICH NORSE ENVIRONMENTAL  
MOVING IN  
ROBERT MOY ESTATE AGENTS  
PARKER ANDREWS  
THE FORUM  
**TOTAL INCOME £16300**



### Norwich in Bloom Scheme Signs

Norwich has around 400 sponsorship/advertising signs across the city on roundabouts, railings and planters.

**C.I.M.'s Mark Baker** designs and manages all signs Mark is also a Trustee and Business Member.

To promote the **RHS Britain in Bloom 2017 Campaign**, Mark has donated 26 signs and 100 window stickers.



# APPENDICES

## Eastern Daily Press

### One Planet Norwich Festival attracts thousands of families

PUBLISHED: 17:28 06 May 2017 | UPDATED: 21:15 07 May 2017 [Sophie Wyllie](#)



One Planet Norwich Festival at The Forum. Isabella Lewer, 10, looking at a bee and bug hotel. Picture : ANTONY KELLY

**Budding eco-warriors can learn the importance of protecting planet earth at a free interactive city centre attraction this weekend.**

The One Planet Norwich Festival, organised by Norwich City Council, started today at the Forum and attracted thousands of families, children and toddlers.

Thought-provoking and fun activities are being put on to encourage adults to make small changes to improve the environment as well as pass on an environmentally-friendly legacy to youngsters.

Activities include a cycle-powered cinema showing a Wallace and Gromit film and cycle-powered race car track, an interactive science show, seed planting, a photograph exhibition showing worldwide landscapes, a seedball-making workshop to encourage bees and nature, and guided walks.

Visitors can also hear live music, learn about car sharing and allotment opportunities in the city, recycling, vegetarianism and veganism and sustainable living.

Claire Tullett, environmental strategy officer for the council, said: "We are trying to educate and empower people in a fun way. It is about legacy and what people are leaving behind for the younger generation. "It is a different way to approach the subject - we need to live within our means."

The One Planet ethos is about encouraging people to live in a more sustainable way and limiting CO2 emissions. Globally, the human race is consuming naturally-renewing resources and polluting the planet at a level 42pc higher than the earth can sustain, according to the Bioregional charity.

One Planet Norwich Festival, in its third year, aims to tackle this issue through inspiring people to take action. "There are small steps that everyone can take," Ms Tullett added.

Ben Bridgeman, 31, from Lowry Cole Road in Sprowston, Norwich, who visited the festival with his four-year-old daughter Pearl, said: "It is very informative and encourages people into the direction of living in a sustainable way. It gets people talking about it which is important."

Charlotte Archer, 40, from Norwich, who was at the event with her six-year-old son Zack, said: "The activities are really varied. There is lots of useful information about being environmentally-friendly. It is great for the community." visit [www.norwich.gov.uk/oneplanetnorwich](http://www.norwich.gov.uk/oneplanetnorwich)



# APPENDICES

Evening News | Monday, October 31, 2016



Follow us on Twitter  
@eveningnews



■ Judges Ed Hooker III, front left, and Bill Ivison, right, when they visited the garden at the Assembly House for the International Communities in Bloom competition. With them are members of the Friends of Norwich in Bloom.

Pictures: DENISE BRADLEY



## International acclaim for gardening team

Eleanor Pringle

eleanorpringle@archant.co.uk

The team at Norwich in Bloom has received international success, thanks to its long-standing hard work keeping Norwich bloom-tiful.

At the Bloom Awards, held in Regina, Canada, over the weekend, the Norwich in Bloom bid for the International Challenge was given a full five out of five blooms, and a bronze commendation.

Terry Bane, a Friends of Norwich in Bloom trustee and ambassador, said: "We were rated a bronze - which some people on the team may be disappointed by.

"Although we didn't win the category, the winning team from a very big city in Canada, Edmonton, only won a silver commendation."

He continued: "That just

**"The honour was to get to the finals"**

Terry Bane, Friends of Norwich in Bloom trustee and ambassador

shows that if the winner was a silver, how high the standard of the competition is set."

This year also marks the Norwich group's 35th anniversary.

Mr Bane continued: "The honour was to get to the finals.

"We may not be invited again for another few years, as we couldn't send a representative to the awards ceremony which happened last night, but we will continue to keep Norwich blooming marvellous!"

Norwich was one of the few entrants to be shortlisted for the award.

"I believe there were about five or six of us in the category," Mr Bane added.

"Besides ourselves, there was another town in Leicester that was short-listed, and then a city in Turkey, among others."

Mr Bane is one of the three remaining founding members of the Friends of Norwich in Bloom, and has now worked in horticulture for 40 years in Norwich.

He said: "I am very proud to have made this achievement and will continue as long as I can to ensure Norwich and the Anglia region keep looking good and be environmentally rich through my passion and supporting network of volunteers and business."

International Challenge



Defi international

Norwich City  
Norfolk, England

Very large Category



Recognition for  
Heavenly Gardens

Bob Lewis  
National Chair / Président

Russell Carter  
President / Président / President

Regina, Saskatchewan



# APPENDICES PLANT - PRODUCTION 2017

## HOCKERING NURSERY A47, HOCKERING, NEAR DEREHAM, NORFOLK NR

SUMMER BEDDING AND CONTAINERS		Number Plants	Tray size
BACOPA	SNOWFLAKE	432	144
BACOPA	BLUE DELIGHT	288	144
BEGONIA	BOSSA NOVA CLEAR WHITE	504	126
BEGONIA	BOSSA NOVA ORANGE	504	126
BEGONIA	ILLUMINATION APRICOT	252	126
BEGONIA	ILLUMINATION WHITE	252	126
BIDENS	BEE SUPER SUN	288	144
BIDENS	SPOTLIGHT	200	100
CALIBRACHOA	NOA BLUE LEGEND	288	144
CALIBRACHOA	NOA PAPAYA	288	144
CALIBRACHOA	NOA SUNSET	288	144
CALIBRACHOA	NOA SUNRISE	288	144
DAHLIA	DIABLO MIXED	480	480
DIASCIA	LITTLE DANCER	288	144
DIASCIA	LITTLE TANGO	288	144
FELICIA	VARIEGATED	144	144
GAZANIA	FROSTY FLAME MIXED	960	480
GERANIUM	GEN RAINBOW NEON	336	84
GERANIUM	GEN RAINBOW WHITE	336	84
GERANIUM	PELGARDINI MADAM SALLERON	504	84
GERANIUM	MORNING SUN	504	84
IMPATIENS	SUNPATIENS SPREADING CORONA	336	84
LAURENTIA (Isotoma)	AVANTE-GARDE	288	144
MARGUERITE	DAISY CRAZY SOLE MIO	300	100
OSTEOSPERMUM	ERATO BASKET WHITE	192	84
OSTEOSPERMUM	FLOWER POWER YELLOW EVOL	300	84
PETCHOA	SUPERCAL CHERRY IMP	288	144
PETUNIA	CRAZYTUNIA CHERRY CHEESECAKE	144	144
PETUNIA	CRAZYTUNIA MANDEVILLE	144	144
SCAEVOLA	BRILLIANT	400	100
VERBENA	TIARA MICKY BLUE LAVENDER	288	144
VERBENA	TIARA MICKY MAGENTA PINK	288	144
VERBENA	TIARA MICKY ROSE WHITE	288	144
TOTALS		10968	
SUMMER PERENNIAL CONTAINERS			Tray Size
ERIGERON	KARVINSKIANUS STALLONE	288	144
GAURA	GAMBIT ROSE	202	51
GAURA	SPARKLE WHITE	144	144
GERANIUM	ROZANNE	100	50
TOTALS		734	
AUTUMN BEDDING AND CONTAINERS			Tray Size
BELLIS	GALAXY ROSE	960	480
BELLIS	GALAXY WHITE	960	480
ERYSIUM	APRICOT TWIST	100	50
ERYSIUM	PLANT WORLD LEMON	100	50
ERYSIUM	WINTER LIGHT	100	50
HEDERA	SILVER VARIEGATED	300	50
POLYANTHUS	CRESCENDO BELLA ROSA	1440	360
POLYANTHUS	CRESCENDO ORANGE	1440	360
POLYANTHUS	CRESCENDO BRIGHT RED	1080	360
POLYANTHUS	CRESCENDO PURE WHITE	1080	360
PANSY	SUPREME ORANGE	720	360
PANSY	FRIZZLE SIZZLE F1 MIX	720	360
GRASSES and SHRUBS			Tray Size
ACORUS	GRAMNEUS GOLDEN EDGE	54	18
ARALIA	SUN KING	50	50
ASTELIA	NERVOSA SILVER SHADOW	36	18
ASTELIA	RED DEVIL	54	18
CAREX	OSHMENSIS EVERILLO	108	18
HEBE	EYECATCHER	54	18
HEBE	JEWEL OF THE NILE	54	18
HEBE	PURPLE SHAMROCK	54	18
LIBERTIA	TAUPO SUNSET	54	18
NANDINA	DOMESTICA FIREPOWER	60	20
OPHIPOGON	BLACK BEARD	108	18
PHORMIUM	GOLDEN SWORD	54	18
PHORMIUM	JOKER	54	18
STIPA	GIGANTEA	18	18
UNCINIA	RUBRA EVERFLAME	154	77
TOTALS		966	

## CITY COLLEGE NORWICH, IPSWICH RO

SUMMER BEDDING AND CONTAINERS	
BEGONIA	ILLUMINATION APRICOT SHAD
BEGONIA	PRESIDENT
BACOPA	SNOWFLAKE
BIDENS	BEE SUPER SUN
CALIBRACHOA	MILLION BELLS TRAILING BLU
CALIBRACHOA	NOA PAPAYA
CALIBRACHOA	NOA SUNRISE
CINERARIA	MARITIMA
COLEUS	FAIRWAY MIX
COLEUS	WALTER TURNER
FELICIA	VARIEGATED
FUCHSIA	LA CAMPANELLA
FUCHSIA	PINK BLUE
FUCHSIA	SOUTHGATE
FUCHSIA	DOLLAR PRINCESS
GAZANIA	FROSTY FLAME MIXED
IMPATIENS	SUNPATIENS VIGOUROUS OR
IMPATIENS	SUNPATIENS VIGOUROUS SC
IMPATIENS	SUNPATIENS VIGOUROUS WH
LANTANA	ESPERATA RED
LOBELIA	BIG BLUE
LOTUS	MACULATUS GOLD
OSTEOSPERMUM	ERATO SPECIAL FIRE
OSTEOSPERMUM	ERATO SPECIAL ORANGE
OSTEOSPERMUM	ERATO COMPACT BURGUNDY
OSTEOSPERMUM	ERATO YELLOW
PELARGONIUM	REGALIA CHOCOLATE
PETCHOA	TERRACOTTA
PETCHOA	VELVET
PETUNIA	BACK TO BLACK
PETUNIA	TABLE SCARLET
SCAEVOLA	BRILLIANT
TOTALS	
AUTUMN BEDDING AND CONTAINERS	
BELLIS	GALAXY ROSE
BELLIS	GALAXY WHITE
PRIMROSE	DANOVA MIX
PRIMROSE	AMBIE MIX
PRIMROSE	RUBENS MIX
PRIMULA	AUCALIS ZEBRA BLUE
POLYANTHUS	CRESCENDO BELLAROSA
POLYANTHUS	CRESCENDO BLUE
POLYANTHUS	CRESCENDO ORANGE
POLYANTHUS	CRESCENDO BRIGHT RED
POLYANTHUS	CRESCENDO PURE WHITE
RANUNCULUS	MACHE MIX
TOTALS	
SEEDS	
ARMERIA	BALLERINA LILAC
ARMERIA	BALLERINA RED
ARMERIA	BALLERINA WHITE
ASTIBLE	ARENDsii SHOWSTAR
CATANCHE	CAERULA
CATANANCHE	ARMOR WHITE
CELOSIA	FRESH LOOK ORANGE
CLEOME	SPARKLER WHITE
GERANIUM	MOULIN ROUGE SCARLET
LIATRIS	LIATRIS FLORISTAN VIOLET
LIATRIS	LIATRIS FLORISTAN WHITE
RHODOCHITON	ATROSANGUINEUS
SALVIA	FAIRY QUEEN
SWEET WILLIAM	ROUNDABOUT MIXED
VERBENA	VENOSA
TOTALS	



# AD, NORWICH, NORFOLK NR2 2LJ

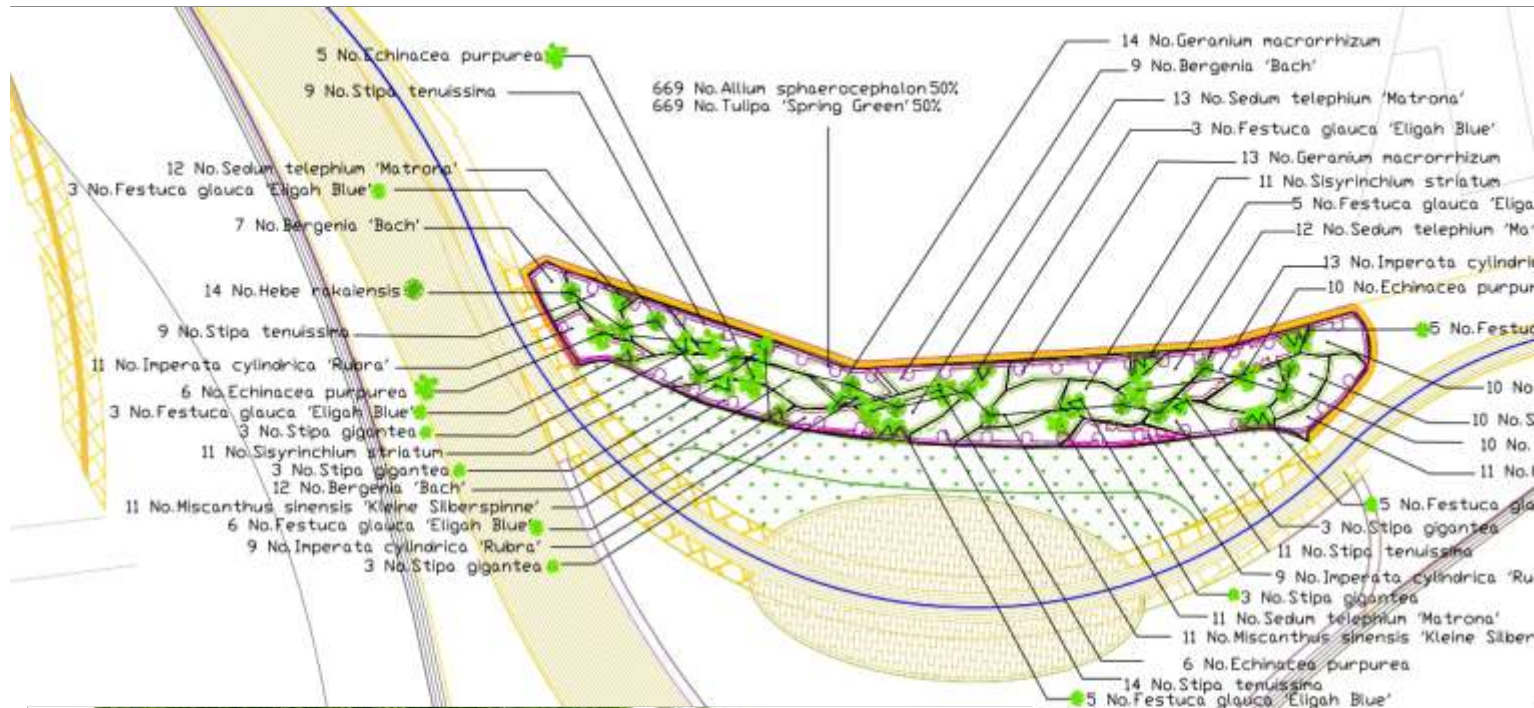
			Tray size
DES		126	126
		720	360
		288	144
		144	144
E		144	144
		144	144
		144	144
		480	480
		480	480
		50	50
		144	144
		204	102
		204	102
		204	102
		960	480
RANGE		168	84
ARLET		168	84
HITE		168	84
		128	128
		288	144
		144	144
		84	84
		84	84
		84	84
		84	84
		200	100
		200	100
		200	100
		128	128
		128	128
		400	100
		7296	
			Tray Size
		480	480
		480	480
		360	360
		360	360
		360	360
		360	360
		1080	360
		360	360
		1080	360
		720	360
		720	360
		720	360
		7080	
		GROW	PKT Size
		500	2 X 250
		500	2 X 250
		500	2 X 250
		200	
		200	5 grammes
		200	1 x 500
		500	3 x 500
		50	2 x 50
		2,200	10,000
		200	1 x 500
		200	1 x 500
		100	2 X 100
		200	2 X 500
		300	1 X 1000
		500	2 X 1000
		5850	

PERENNIALS				Tray Size
ACANTHUS	MOLLIS		60	60
ACHILLEA	FILIPENDULA CLOTH OF GOLD		144	144
ACHILLEA	SUMMER FRUITS LEMON		84	84
ACHILLEA	MILLIFOLIUM TERRACOTTA		50	50
AEONIUM	ARBOREUM ZWARTKOP		100	50
AGAPANTHUS	BIG BLUE		72	18
AGAPANTHUS	JACKS BLUE		144	28
AGAPANTHUS	BLACK PANTHA		50	
AGAPANTHUS	QUEEN MUM		100	50
ARALIA	SUN KING		50	50
BRUNNERA	ALEXANDERS GREAT		100	50
DIANTHUS	BAILYS CELEBRATION		104	104
DIANTHUS	BUBBLEGUM		104	104
DIANTHUS	DORIS		104	104
DIANTHUS	LADY IN RED		104	104
DIANTHUS	LILY THE PINK		104	104
DIANTHUS	MRS SINKINS		104	104
DIERAMA	BLACKBIRD		36	18
DIERAMA	IGNEUM		36	18
DIERAMA	PINK ROCKET		36	18
DORONICUM	LITTLE LEO		208	104
ERIGERON	KARVINSKIANUS STALLONE		288	144
ERIGERON	SPECIOSUS BLUE BEAUTY		288	144
ERIGERON	SPECIOSUS ROSE JEWEL		288	144
GAILLARDIA	X GRANDIFLORA MESA BRIGHT BICOLOUR		144	144
GAILLARDIA	X GRANDIFLORA MESA RED		144	144
GAURA	SPARKLE WHITE		144	144
GERANIUM	ROZANNE		400	50
HESPERANTHA (Schizanthus)	SNOWCINEMA MAJOR		400	50
HEUCHERA	FIRE CHIEF		100	50
HEUCHERA	GEORGIA PEACH		100	50
HEUCHERA	PARIS		100	50
KNAUTIA	MACEDONICA RED KNIGHT		144	144
KNAUTIA	MACEDONICA MELTON PASTELS		144	144
KNIPHOFIA	LEMON POPSICLE		50	50
KNIPHOFIA	ORANGE VANILLA POPSICLE		50	50
KNIPHOFIA	PAPAYA POPSICLE		50	50
LAVENDULA	PETER PAN		288	
LEUCANTHEMUM	ANGEL		50	50
LEUCANTHEMUM	BANANA CREAM		50	50
LEUCANTHEMUM	WHITE MOUNTAIN		50	50
LEUCANTHEMUM	SNOWLADY		84	84
LOBELIA	STARSHIP SCARLET		84	84
LUPIN	POLYPHYLLUS TUTI FRUITI		144	144
MECONOPSIS	LINGHOLM		100	50
MONARDA	DIDYMA FIREBALL		100	50
MONARDA	DIDYMA PINK SUPREME		100	50
MONARDA	DIDYMA PARDON MY PURPLE		100	50
NEPETA	FAASSENII PURISIAN BLUE		100	50
OENOTHERA	AFRICAN SUN		100	50
OENOTHERA	LEMON SUNSET		144	144
PENSTEMON	ICE CREAM BLACBERRY		100	50
RUDBECKIA	FULGIDA SULLIVANTI GOLDSTRUM		144	144
SALVIA	AMISTAD		100	50
SALVIA	SUPERBA NEW DIMENSION BLUE		144	144
SILENE	LACINIATA STARRY DREAMS		144	144
VERBASCUM	JESTER		50	50
VERBASCUM	SUGAR PLUM		50	50
GRASSES and SHRUBS				Tray Size
CAREX	OSHMENSIS EVERGOLD		200	50
CHOIYSA	WHITE DAZZLER		84	84
HAKONECHLOA	MACRA STRIPE IT RICH		84	18
OPHIPOGON	BLACK BEARD		54	18
PENNESETUM	SETACETUM RUBRUM		50	50
PENNESETUM	MACURUM TAIL FEATHERS		144	144
PENNESETUM	VILLOSUM CREAM FALLS		144	144
UNCINIA	RUBRA EVERFLAME		77	77
	TOTALS		837	
ALPINES				Tray Size
ERODIUM	FLORA PLENA		300	100
ERODIUM	BISHOPS FORM		300	100
LITHODORA	HEAVENLY BLUE		256	
	TOTALS		856	



# APPENDICES

## All Saints Green and Ber Street - New Landscape Planting Plan 2017



**Planting up All Saints Green New Raised Flower bed  
Sponsored By John Lewis 17th May 2017**







Google aerial view prior to changes

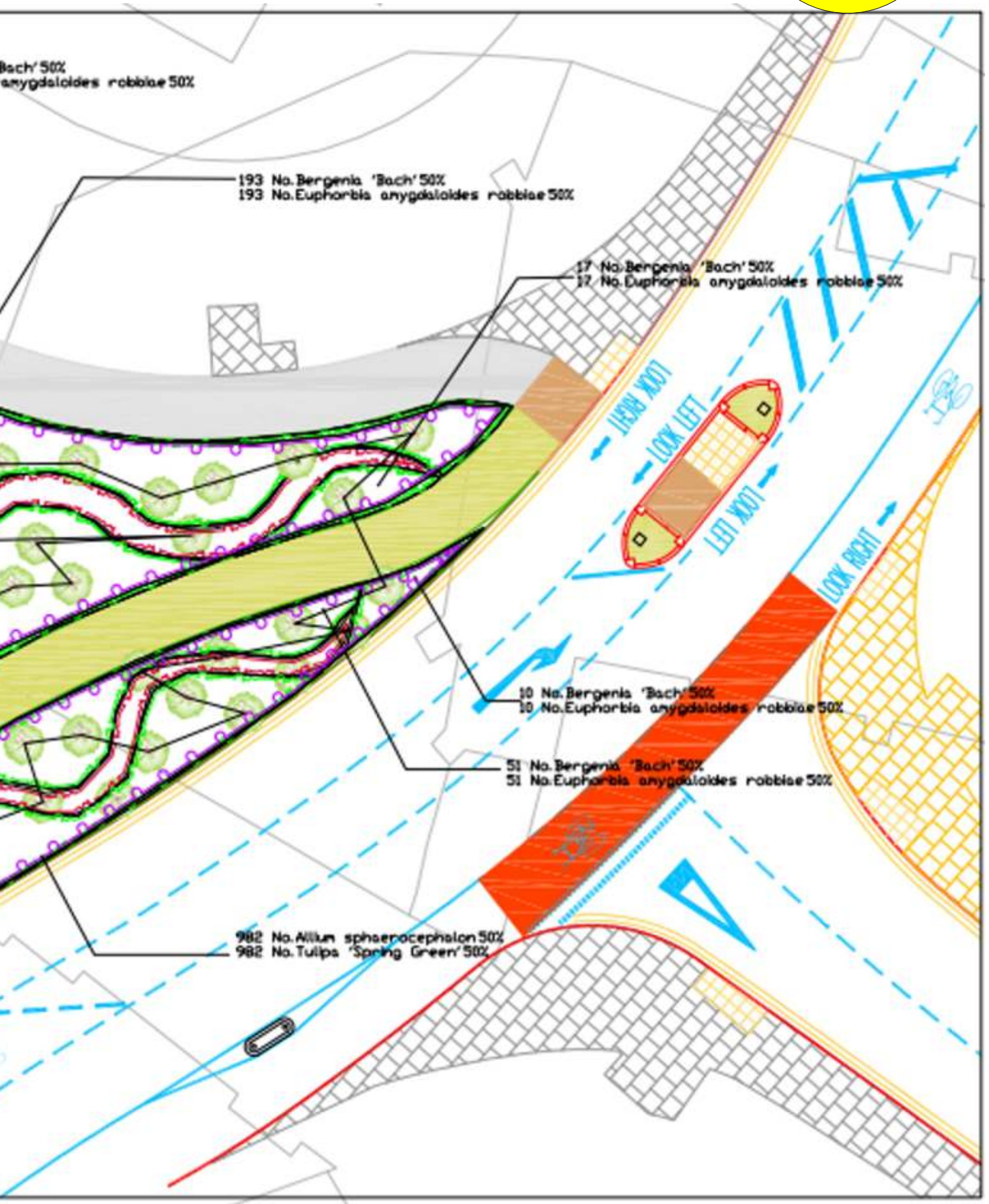


# APPENDICES

## Golden Ball Street Area - New Cycle Way and Planting Plan 2017









# GEORGE ISHMAEL - NORWICH BID Category

I have known and worked with George Ishmael both at Norwich City Council and as a volunteer with Friends of Norwich in Bloom for nearly 40 years, I would like to nominate George to receive a well deserved Community Champion Award at the RHS Britain in Bloom ceremony in Llandudno 2017.

George was my line Manager in 1999 and being very supportive of Friends of Norwich in Bloom, Anglia in Bloom and RHS Britain in Bloom asked me to work closely with Bill Webster then Chair of Friends of Norwich in Bloom and attend a RHS Britain in Bloom seminar in Dumfries, which developed into a life time friendship with Bill and helped enhance Norwich.

George is quiet but extremely committed; his horticultural knowledge, particularly landscaping is respected and used by so many, George was the first to use "New Wave Perennial" and prairie plantings in Norwich inspiring me to develop further in the Norwich landscape as "Sustainable Perennials".

Over the last few years George has voluntarily been acting as a trustee of the Norwich Historic Churches Trust, leading on the 'Heavenly Gardens' initiative to develop 32 medieval churchyards in Norwich into a community-based botanic garden. Visit <http://www.heavenlygardens.org.uk/>

Perhaps the best known and most successful Heavenly Garden is St. Stephens Church, for which George drew up the original plans. The community effort here has been central to a number of Anglia in Bloom and Britain in Bloom awards over the past ten years, as part of the Mancroft Urban Community



**Above - George Ishmael  
Below- One of George's  
Heavenly Gardens Trails**

As well as serving on the Landscape Institutes Professional Practice steering group, George has also taught a range of landscape-related subjects, including landscape history, countryside management (Bishop Burton college); garden design (Open College of the Arts) and landscape design to degree level (UCS Otley). He has also led numerous guided walks for a range of organisations in Norwich and Norfolk.

George is involved and supportive of so many Norwich environmental projects including:

Friends of Norwich in Bloom

Heavenly Gardens

Grow-Our-Own (GO<sup>2</sup>) allotment project and Marpit Community Garden (Sustainable Living Initiative)





# ry RHS Community Champion Nomination 2017

## Ishmael Landscapes <http://www.ishmael Landscapes.co.uk>

George Ishmael, a chartered landscape architect with background in urban design and ecologically sustainable landscapes. This practice is strongly customer focused and encourages collaborative working with a network of design, arts related and environmentally trained professionals both here and abroad.

We aim to bring out the local distinctiveness of a landscape and actively seeking design innovation, while working with local communities and supporting heritage tourism.

George Ishmael has spent over 30 years with Norwich City Council concerned with landscape matters, variously as designer; leader of the landscape team; manager of the City's green spaces; and as a champion of landscape planning & strategy. Some highlights of this work include:

1. Urban greening initiatives, such as the Green Plan for Norwich (RTPI Planning Achievements Award, 1986); a Green Links strategy to create a network of traffic-free routes (RICS Greening the City Award 1996) and the Norwich River Valleys Strategy.
2. A wide range of environmental improvements, from city centre pedestrianisation, civic spaces and housing (Civic Trust and other awards), to parks and nature reserves (RTPI Planning Achievements Award, 1997).
3. A range of collaborative work from major prestige projects, such as Castle Mall (RTPI Silver Medal); UEA; Riverside; the Chapelfield development; to low-budget community-based projects (Britain in Bloom Gold Award 2008 and Communities in Bloom International Award 2009).
4. Designing some of the earliest urban Eco-parks in the UK and pioneering more sustainable approaches to urban planting (HLF award of £4M for Norwich parks restoration).
5. Pioneering national best practice in tree protection, recognized in national government report Trees in Cities 1990 and workshops for Planning Inspectorate 2003.
6. Establishing some of Norwich's first environmental partnerships (BTCV, Wensum Valley Project and Norwich Urban Fringe Project).
7. Collaborative work with other cities in the EU Interreg Programme (e.g. Water City International; Liveable City; Spatial Metro), helping establish Norwich's reputation as a European city.
8. George also helped set up the Norfolk Historic Gardens Trust and the Plantation Garden Trust. He is a trustee of the Friends of Norwich in Bloom and Norfolk & Norwich Horticultural Society.

In 2010 George personally funded and made a submission on behalf of the City of Norwich to LivCom, travelling to Chicago as a finalist. George single handed won a Gold and won the category for Norwich. He also received a Special award for his Heavenly Gardens initiative.

George is a deserving candidate to receive a RHS Britain in Bloom Community Champion Award 2017 for all his passion, achievements and commitment.

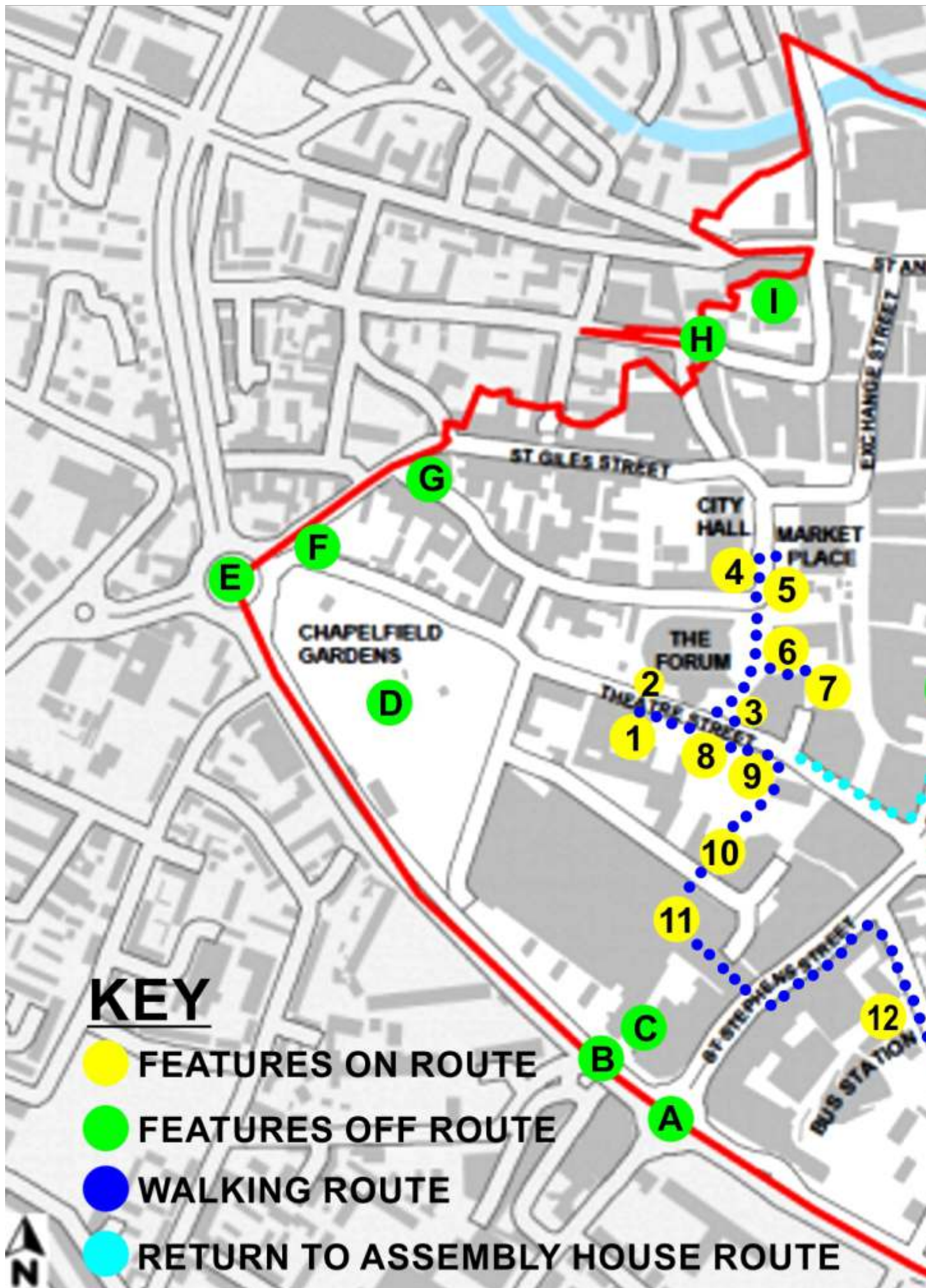
## **Terry Bane**

Friends of Norwich in Bloom Life Member and Honorary Ambassador Anglia in Bloom



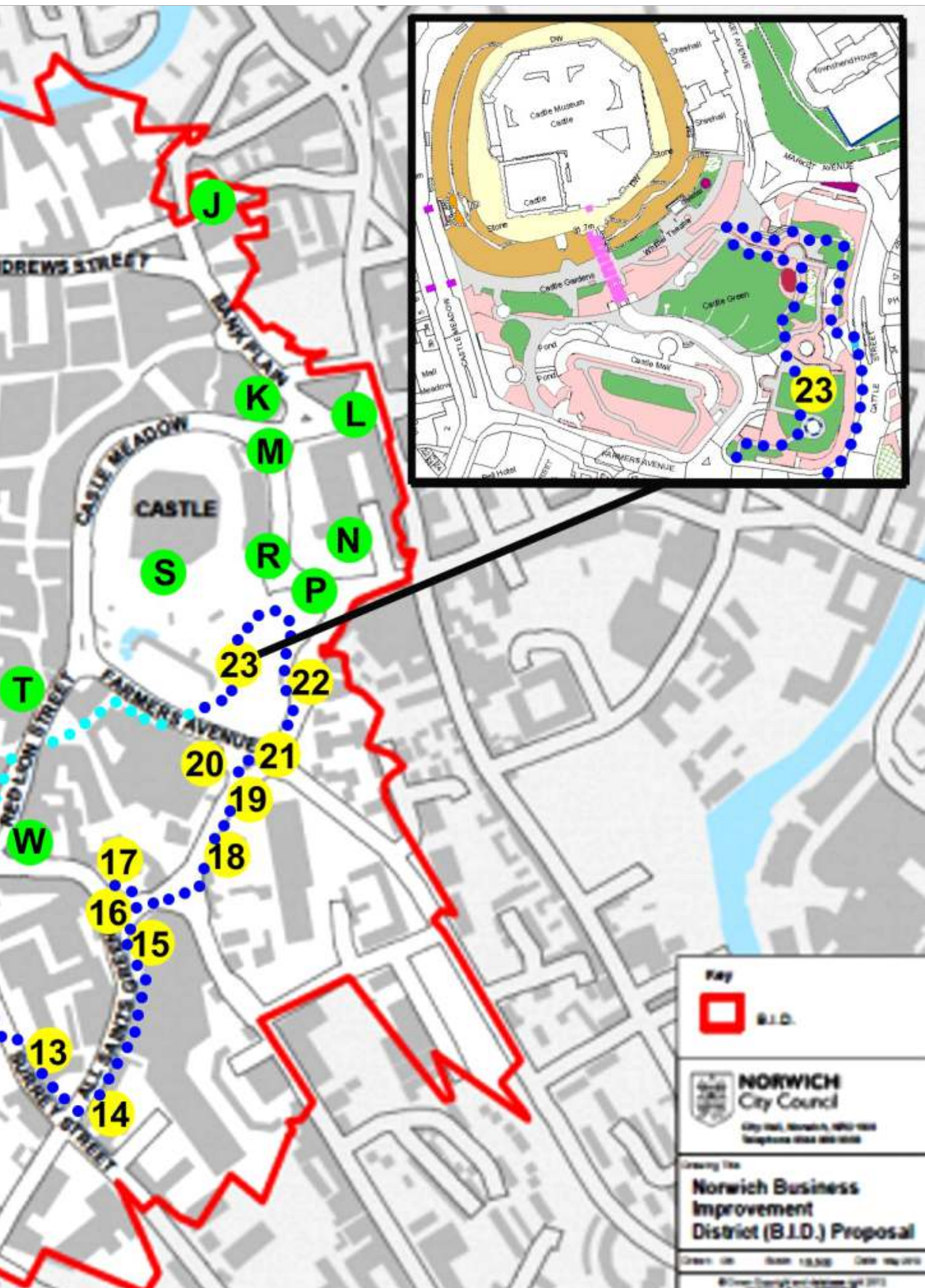


# ANGLIA IN BLOOM and RHS BRITAIN





# N IN BLOOM JUDGING ROUTE 2017





# ANGLIA IN BLOOM and RHS BRITAIN IN BLOOM NORWICH BID TOUR ROUTE

## Tuesday 18th July and Tuesday 8th August 2017

18th July 9.00am Meet Anglia in Bloom judges, **George Dawson** and **Chris Durham** The Assembly House, Theatre Street, Norwich, Norfolk NR2 1RQ.

8th August 9.00am Meet RHS Britain in Bloom judges, **Richard Budge** and **Bill Ronald**

Tour Guides Mike King, Terry Bane 077768 287081 George Ishmael 07969 053609, Ed Purnell 07923 469239, Jo and Reg Chiddick 077668 17991

Tour Runners (Walkers) To Be Confirmed

No.	Tour Destination/View	Arrival	Meet	Depart
1	The Assembly House Music Room - <b>PRESENTATION, PULL UPS and DISPLAY BOARDS</b> Refreshments Available	9.30am	Rachael Fretter <b>NORWICH BID</b>	9.45am
1	The Assembly House - <b>PRESS CALL</b>	9.45am	<b>ALL</b>	
1	Bill Webster Memorial Bench, Sustainable Flower Beds, Amberol Hogs Head Barrels and Trough (Donated by Terry Bane) Planters and Hanging Basket Tree	10.00am	Sarah Wilkinson - <b>Assembly House Gardener</b>	10.10am
2	Theatre Street - "NORWICH" Sustainable Display <b>Sponsored by Hatch Brenner</b> and Norwich in Bloom Information Board	10.10am	Jo and Reg Chiddick - <b>Friends Norwich in Bloom</b>	10.11am
3	Theatre Street - <b>Recycle Bins</b>			
4	City Hall	10.14am	City Council Dignitaries, Members and Officers	
4	City Hall - Sustainable Perennial Border		Sue Roe, Roy Holmes and <b>City Hall Volunteer Team</b>	10.20am
5	Memorial Gardens - Monument and recently refurbished plantings	10.21am	Nick Bugden - <b>Notcutts</b>	10.26am
6	St. Peter Mancroft Church - Edible Flowers Display, Railing Baskets	10.25am	George Ishmael - <b>Heavenly Gardens</b>	10.31am
7	Hay Hill - Heritage Thomas Brown Statue and art in the landscape			
8	Hatch Brenner - Commercial Baskets and Council Flower Bed maintained by Hatch Brenner - View building <b>NORWICH BID</b> Mural and Dragon in distance	10.32am	<b>Hatch Brenner</b>	10.35am
9	St. Stephens Church - Barrel Planters, Drought Perennial Border, Summer Bedding, Wildflower area and Wildlife Habitat boxes and View M&S Living Wall	10.35am	Sally Clarke, Jo and Reg Chiddick, Vinney and <b>St. Stephens Church Volunteers</b>	10.45am
10	Chapelfield Plain - Outside Eating Area with Planters and Signage	10.45am	Paul McCarthy and <b>INTU Chapelfield Staff</b>	10.46am
11	INTU Chapelfield - Waste Mangement, Recycling and Energy Conservation	10.47am	Jo Bates and INTU Chapelfield Staff	10.57am
12	Surrey Street Free School - Developing Garden	11.05am	Emma Collier, Tania Sidney-Roberts and Pupils	11.20am
13	Surrey Street - <b>AVIVA</b> - View Floral Containers	11.21am		
14	All Saints Green - <b>Contract Personnel</b> - View Courtyard Garden	11.22am		
15	All Saints Green - New Beecham Barrier Baskets on railings <b>Sponsored by John Lewis</b>	11.26am	Richard Marks GM <b>John Lewis</b>	11.19am
16	All Saints Green - New Landscape, Trees and Sustainable Planting <b>Sponsored by John Lewis</b>	11.19am	Lara Hall <b>Norwich City Council</b>	11.25am
17	All Saints Green Church - Communities in Bloom Tree Planting and Twin City Sustainable Garden	11.25am	George Ishmael and Tony Hufton - <b>Heavenly Gardens Volunteers</b>	11.31am
18	Golden Ball Street - The Woolpack PH Hanging Baskets and <b>NORWICH BID</b> City of Stories Mural	11.35am		
19	Golden Ball Street - New Sustainable Display, Designed, Created and <b>Sponsored by Norwich Norse Environmental</b>	11.36am	Hannah Leys, Leigh Croft and Nick Weavers <b>Norwich Norse Environmental</b>	11.43am
20	Golden Ball Street - Barrier Baskets <b>Sponsored by C.I.M. and Norwich Accountancy Services</b> - View from Silver Birch Stand	11.43am		
21	Golden Ball Street - New Silver Birch and Sustainable Planting and New Cycle Way and Road Improvements	11.43am	Imogen Mole/Mark Dunthorne <b>Norwich City Council</b> walk and talk Trees	
22	Cattle Market Street - View Barrier Baskets <b>Sponsored by ABC Taxis and King and Co</b>	11.44am		
23	Castle Gardens - Walk through Gardens, viewing Heritage Bridge, onto Roof Top Garden viewing Childrens Playground, Picknick Area, Barrier Baskets on railings and Art in The Landscape - <b>VIEW CITY LANDSCAPE</b>	11.45am	Meet <b>Castle Mall Management</b>	12.00am
<b>COMPLETE TOUR, RETURN TO THE ASSEMBLY HOUSE</b>				
1	The Assembly House Music Room - <b>BUFFET LUNCH</b>	12.20am	Meet Team, Sponsors and Supporters	
<b>TOTAL ROUTE WALK TIME = 32 - 35 Minutes</b>				

### PORTFOLIO AND OFF ROUTE FEATURES AND PROJECTS

<b>A</b>	<b>St. Stephens Roundabout</b> - Poppy and Hardy Annual Display	<b>J</b>	<b>St. Michael At Plea Church</b> - White Wisteria and Sustainable Planting
<b>B</b>	<b>Chapelfield Road</b> - Barrier Baskets <b>Sponsored by ABC Taxis, C.I.M. Parker Andrews, and Norwich Accountancy Services</b>	<b>K</b>	<b>Norwich Accountancy Services</b> - Roof Top Garden
<b>C</b>	<b>INTU Chapelfield</b> - Pergola Hanging Baskets	<b>L</b>	<b>Prince of Wales Road</b> - Sustainable Plantings <b>Sponsored by C.I.M.</b>
<b>D</b>	<b>Chapelfield Gardens</b> - 2 Childrens Play Areas, Perennial/Shrub Beds, Bulb/Wildflower areas, Trees, Art in the Landscape Ketts Dancer Sculptures and Sunflower Gates, Gardens used for Fairs and Cultural Events	<b>M</b>	<b>South African War Memorial</b> - 4 Planters enhancing Memorial Statue <b>various sponsors</b>
<b>E</b>	<b>Grapes Hill Roundabout</b> - Sustainable Perennial Planting <b>Sponsored by INTU Chapelfield</b>	<b>N</b>	<b>NPS</b> - New Perennial Planting
<b>F</b>	<b>Cleveland Road</b> - Sustainable Perennial Planting	<b>P</b>	<b>Market Avenue</b> - <b>DEFRA Funded</b> Sustainable Perennial Planting <b>Sponsored by Arbons</b>
<b>G</b>	<b>St. Giles/Bethel Street</b> - <b>DEFRA Funded</b> Sustainable Perennial Planting	<b>R</b>	<b>Market Avenue</b> - Barrier Baskets <b>Sponsored by ABC Taxis, Norwich Accountancy Services and Parker Andrews</b>
<b>H</b>	<b>St. Gregorys Alley Open Space</b> - Sustainable Planting	<b>S</b>	<b>Castle Gardens</b> - Wildflower Mound
<b>I</b>	<b>Strangers Hall Gardens</b> - 17th Century Knot Garden	<b>T</b>	<b>The Lamb Inn</b> - Hanging Baskets and outdoor area
		<b>W</b>	<b>Red Lion Street</b> - <b>NORWICH BID</b> City of Stories Dragon Mural



# Anglia in Bloom Special Awards Form 2017

A special awards form will be enclosed with the notification form. Please make sure these are filled in with your nominated projects for a special award. On the day the judges visit please hand this form to them when they arrive. Don't forget the disc/memory stick with 6 correctly captioned photographs for each nomination. This is your passport to a successful entry. It is important that you make sure the judges know and see each special award entry you wish to be considered.

The categories are listed below.

Entrant **NORWICH BUSINESS IMPROVEMENT DISTRICT** Category **(BID)**

SPECIAL AWARD	NOMINATION	LOCATION
<b>Biodiversity</b>	Wildflower area and Wildlife habitat provision	St. Stephens Church
<b>Best community project</b>	St. Stephens Church Volunteers	St. Stephens Church
<b>Best conservation project</b>	Wildflower area and Wildlife habitat provision	St. Stephens Church
<b>Best drought garden</b>	St. Stephens Church Volunteers	St. Stephens Church, Gravel Garden
<b>Environmental quality</b>	<b>No entry needed</b>	
<b>Best floral display by an individual or community</b>	<b>Jo and Reg Chiddick's</b> Flower Beds at St. Stephens Church	St. Stephens Church
<b>Best garden for special needs</b>		
<b>Best Sheltered Housing/ Care Home Gardens</b>		
<b>Grow Your Own</b>		
<b>Best industrial area/ Commercial Area</b>	The Assembly House Sustainable Plantings/Floral Containers	The Assembly House
<b>Best local authority floral display</b>	New Sustainable and Summer Annuals Flower Bed	Golden Ball Street
<b>Most consistently improved Over the last 3 years</b>	<b>No entry needed</b>	
<b>Best new entry</b>	<b>No entry needed</b>	
<b>Best public open space</b>	New Landscape and New Beecham Barrier Baskets	All Saints Green and John Lewis
<b>Mike Ames award</b>	<b>Nominations from entrants and/or judges</b>	<b>John Attoe</b> Over 40 year career in Horticulture with Norwich City Council and City College Norwich.
<b>Best young peoples project (aged under 12 years)</b>		Surrey Street Free School
<b>Best young peoples project (aged 12-18 Years)</b>	City College Norwich Learning Difficulty Students	Growing Plants and Support at St. Stephens Church, Assembly House, Castle Mall and Golden Ball Street

**NB** Make sure you fill out one of these forms prior to commencement of judging.

## Back Cover

Top Left	Hardy Annual and Poppies Display on St. Stephens Street Roundabout 31 <sup>st</sup> May 2017
Middle Left	George Ishmael and Tony Hufton Plant Up All Saints Green Church 23 <sup>rd</sup> May 2017
Middle Right	Pond Bed Spring Tulip Display at The Assembly House 25 <sup>th</sup> April 2017
Middle Left2	Jo and Reg Chiddick admire Ox-Eyed Daisy in Wildflower Area at St. Stephens Church 31 <sup>st</sup> May 2017
Bottom Left	Jon Hook and Ed Purnell Table Tennis at Roof Top Garden Norwich Accountancy Services 7 <sup>th</sup> June 2017
Bottom Right	Summer Barrier Baskets Display at Farmers Avenue Golden Ball Street 7 <sup>th</sup> June 2017





# NORWICH

BUSINESS IMPROVEMENT DISTRICT

